

RPAB2 Antibody

Catalog No: #45942

Package Size: #45942-1 50ul #45942-2 100ul

Orders: order@signalwayantibody.com

Support: tech@signalwayantibody.com

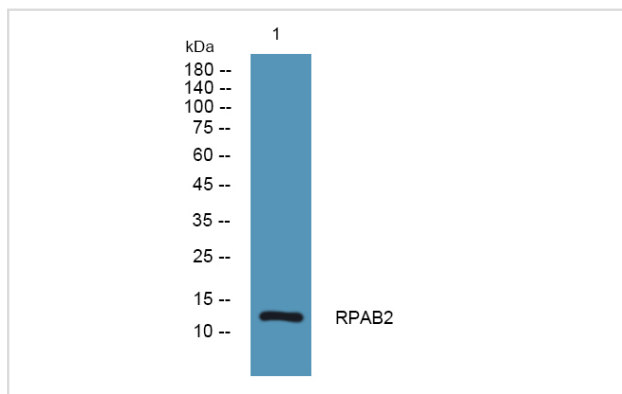
Description

| | |
|-----------------------|--|
| Product Name | RPAB2 Antibody |
| Host Species | Rabbit |
| Clonality | Polyclonal |
| Purification | Immunogen affinity purified |
| Applications | WB |
| Species Reactivity | Hu Ms Rt |
| Specificity | RPAB2 Antibody detects endogenous levels of total RPAB2 |
| Immunogen Type | Peptide |
| Immunogen Description | A synthesized peptide derived from human RPAB2 |
| Target Name | RPAB2 |
| Other Names | POLR2F, RPB6, RPB6 homolog, RPC15, POLRF, RPABC2, HRBP14.4, RPABC14.4, RPB14.4 |
| Accession No. | Swiss-Prot#: P61218NCBI Gene ID:5435 |
| Uniprot | P61218 |
| GeneID | 5435; |
| Calculated MW | 14 kDa |
| Concentration | 1.0mg/mL |
| Formulation | Liquid in PBS containing 50% glycerol, and 0.02% sodium azide. |
| Storage | Store at -20°C |

Application Details

Western blotting: 1:1000-3000

Images



Western blot analysis of lysates from K562 cells, primary antibody was diluted at 1:1000, 4o½ over night

Note: This product is for in vitro research use only