

DYNLRB1 Antibody

Catalog No: #45947

Package Size: #45947-1 50ul #45947-2 100ul

Orders: order@signalwayantibody.com

Support: tech@signalwayantibody.com

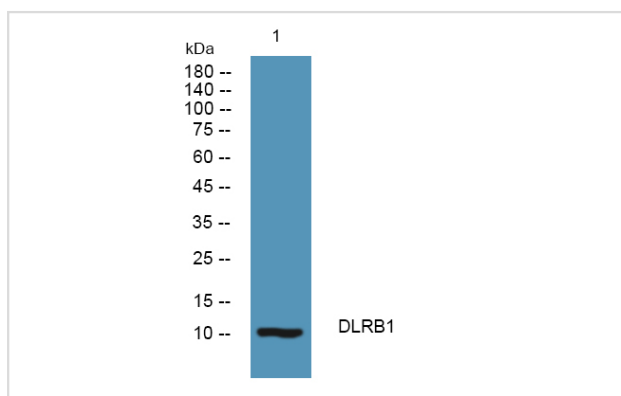
Description

Product Name	DYNLRB1 Antibody
Host Species	Rabbit
Clonality	Polyclonal
Purification	Immunogen affinity purified
Applications	WB
Species Reactivity	Hu Ms Rt
Specificity	DYNLRB1 Antibody detects endogenous levels of total DYNLRB1
Immunogen Type	Peptide
Immunogen Description	A synthesized peptide derived from human DYNLRB1
Target Name	DYNLRB1
Other Names	DYNLRB1, BITH, BLP, DNCL2A, Dynein-associated protein Km23, ROBLD1, Roadblock domain containing 1, Bithoraxoid-like protein, DNLC2A, Roadblock-1, ROBL/LC7-like 1
Accession No.	Swiss-Prot#: Q9NP97NCBI Gene ID:83658
Uniprot	Q9NP97
GeneID	83658;
Calculated MW	11 kDa
Concentration	1.0mg/mL
Formulation	Rabbit IgG in phosphate buffered saline , pH 7.4, 150mM NaCl, 0.02% sodium azide and 50% glycerol.
Storage	Store at -20°C

Application Details

Western blotting: 1:1000-3000

Images



Western blot analysis of lysates from A431 cells, primary antibody was diluted at 1:1000, 4° over night

Note: This product is for in vitro research use only