

MRPS2 Polyclonal Antibody

Catalog No: #28478



Package Size: #28478-1 50ul #28478-2 100ul

Orders: order@signalwayantibody.com  
Support: tech@signalwayantibody.com

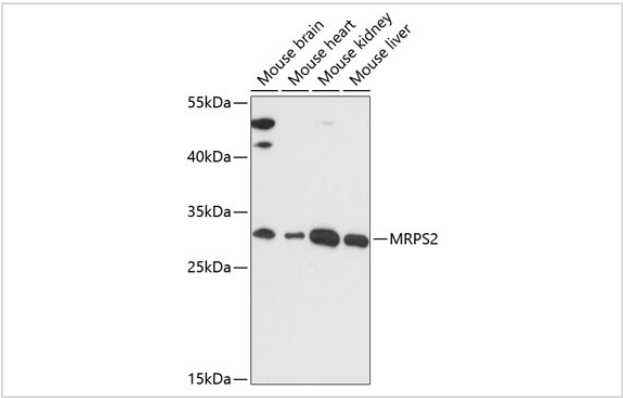
Description

Product Name	MRPS2 Polyclonal Antibody
Host Species	Rabbit
Clonality	Polyclonal
Isotype	IgG
Purification	Affinity purification
Applications	WB,IHC
Species Reactivity	Mouse
Immunogen Description	Recombinant fusion protein of human MRPS2 (NP_057118.1).
Other Names	MRPS2; CGI-91; MRP-S2; S2mt; mitochondrial ribosomal protein S2
Accession No.	Swiss-Prot#:Q9Y399NCBI Gene ID:51116
Uniprot	Q9Y399
GeneID	51116;
Calculated MW	33kDa
Formulation	Avoid freeze / thaw cycles. Buffer: PBS with 50% glycerol, pH7.4.
Storage	Store at -20°C

Application Details

WB 1:500 - 1:2000IHC 1:100 - 1:200

Images



Western blot analysis of extracts of various cell lines, using MRPS2 at 1:3000 dilution.

Background

Mammalian mitochondrial ribosomal proteins are encoded by nuclear genes and help in protein synthesis within the mitochondrion. Mitochondrial ribosomes (mitoribosomes) consist of a small 28S subunit and a large 39S subunit. They have an estimated 75% protein to rRNA composition compared to prokaryotic ribosomes, where this ratio is reversed. Another difference between mammalian mitoribosomes and prokaryotic ribosomes is that the latter contain a 5S rRNA. Among different species, the proteins comprising the mitoribosome differ greatly in sequence, and sometimes in

biochemical properties, which prevents easy recognition by sequence homology. This gene encodes a 28S subunit protein that belongs to the ribosomal protein S2 family. Alternatively spliced transcript variants have been observed for this gene.

---

Note: This product is for in vitro research use only