

GREM2 Polyclonal Antibody

Catalog No: #28487

Package Size: #28487-1 50ul #28487-2 100ul

Orders: order@signalwayantibody.comSupport: tech@signalwayantibody.com

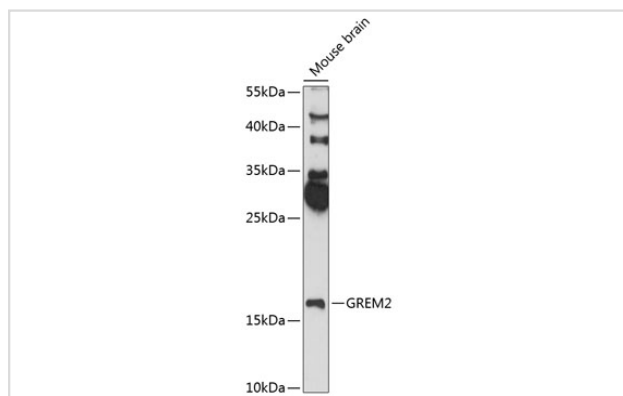
Description

Product Name	GREM2 Polyclonal Antibody
Host Species	Rabbit
Clonality	Polyclonal
Isotype	IgG
Purification	Affinity purification
Applications	WB
Species Reactivity	Mouse,Rat
Immunogen Description	Recombinant fusion protein of human GREM2 (NP_071914.3).
Other Names	GREM2; CKTSF1B2; DAND3; PRDC; STHAG9; gremlin-2
Accession No.	Swiss-Prot#:Q9H772NCBI Gene ID:64388
Uniprot	Q9H772
GeneID	64388;
Calculated MW	19kDa
Formulation	Avoid freeze / thaw cycles. Buffer: PBS with 50% glycerol, pH7.4.
Storage	Store at -20°C

Application Details

WB 1:500 - 1:2000

Images



Western blot analysis of extracts of mouse brain, using GREM2 at 1:3000 dilution.

Background

This gene encodes a member of the BMP (bone morphogenic protein) antagonist family. Like BMPs, BMP antagonists contain cystine knots and typically form homo- and heterodimers. The CAN (cerberus and dan) subfamily of BMP antagonists, to which this gene belongs, is characterized by a C-terminal cystine knot with an eight-membered ring. The antagonistic effect of the secreted glycosylated protein encoded by this gene is likely due to its direct binding to BMP proteins. As an antagonist of BMP, this gene may play a role in regulating organogenesis, body patterning, and tissue

differentiation.

Note: This product is for in vitro research use only