

GPSM1 Antibody

Catalog No: #45993

Package Size: #45993-1 50ul #45993-2 100ul

Orders: order@signalwayantibody.com

Support: tech@signalwayantibody.com

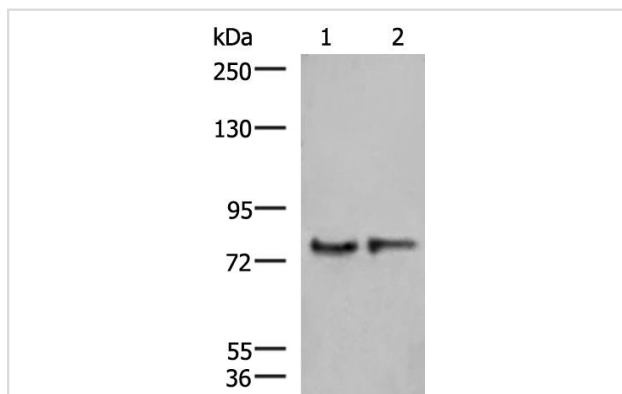
Description

Product Name	GPSM1 Antibody
Host Species	Rabbit
Clonality	Polyclonal
Purification	Immunogen affinity purified
Applications	WB
Species Reactivity	Hu Ms Rt
Specificity	GPSM1 Antibody detects endogenous levels of total GPSM1
Immunogen Type	Peptide
Immunogen Description	A synthesized peptide derived from human GPSM1
Target Name	GPSM1
Other Names	GPSM1, AGS3 homolog, DKFZP727I051, AGS3
Accession No.	Swiss-Prot#: Q86YR5NCBI Gene ID:26086
Uniprot	Q86YR5
GeneID	26086;
Calculated MW	75 kDa
Concentration	1.0mg/mL
Formulation	pH7.4 PBS, 0.05% NaN ₃ , 40% Glycerol
Storage	Store at -20°C

Application Details

Western blotting: 1:1000-3000

Images



Gel: 6%SDS-PAGE

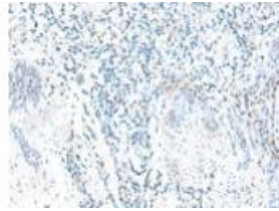
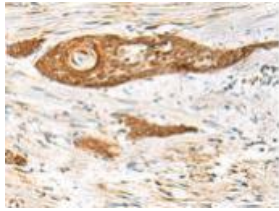
Lysate: 40 ug

Lane 1-2: Human cerebrum tissue and Mouse brain tissue lysates

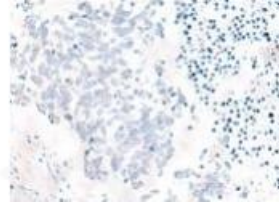
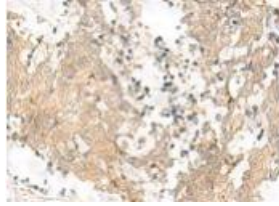
Primary antibody: at dilution 1/1000

Secondary antibody: at 1/5000 dilution

Exposure time: 1 minute



The image on the left is immunohistochemistry of paraffin-embedded Human esophagus cancer tissue using (GPSM1 Antibody) at dilution 1/85, on the right is treated with fusion protein. (Original magnification: \times 200)



The image on the left is immunohistochemistry of paraffin-embedded Human lung cancer tissue using (GPSM1 Antibody) at dilution 1/85, on the right is treated with fusion protein. (Original magnification: \times 200)

Note: This product is for in vitro research use only