

GPSM3 Antibody

Catalog No: #45995

Package Size: #45995-1 50ul #45995-2 100ul

Orders: order@signalwayantibody.com

Support: tech@signalwayantibody.com

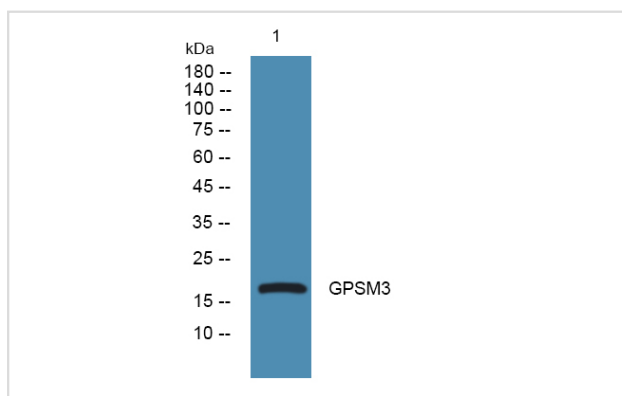
Description

Product Name	GPSM3 Antibody
Host Species	Rabbit
Clonality	Polyclonal
Purification	Immunogen affinity purified
Applications	WB
Species Reactivity	Hu Ms Rt
Specificity	GPSM3 Antibody detects endogenous levels of total GPSM3
Immunogen Type	Peptide
Immunogen Description	A synthesized peptide derived from human GPSM3
Target Name	GPSM3
Other Names	AGS4, C6orf9, G18
Accession No.	Swiss-Prot#: Q9Y4H4NCBI Gene ID:63940
Uniprot	Q9Y4H4
GeneID	63940;
Calculated MW	18 kDa
Concentration	1.0mg/mL
Formulation	Liquid in PBS containing 50% glycerol, and 0.02% sodium azide.
Storage	Store at -20°C

Application Details

Western blotting: 1:1000-3000

Images



Note: This product is for in vitro research use only