

SAR1A Antibody

Catalog No: #46001

Package Size: #46001-1 50ul #46001-2 100ul

Orders: order@signalwayantibody.com

Support: tech@signalwayantibody.com

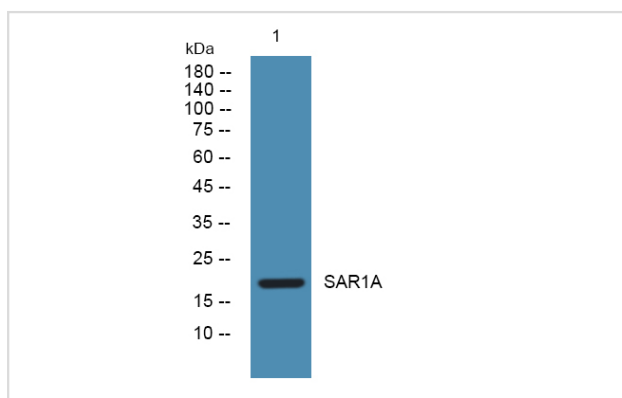
Description

| | |
|-----------------------|---|
| Product Name | SAR1A Antibody |
| Host Species | Rabbit |
| Clonality | Polyclonal |
| Purification | Immunogen affinity purified |
| Applications | WB |
| Species Reactivity | Hu Ms Rt |
| Specificity | SAR1A Antibody detects endogenous levels of total SAR1A |
| Immunogen Type | Peptide |
| Immunogen Description | A synthesized peptide derived from human SAR1A |
| Target Name | SAR1A |
| Other Names | SAR1A, GTP-binding protein SAR1a, Masra2, SAR1 homolog A (S. cerevisiae), SAR1a gene homolog 1, SAR1, COPII-associated small GTPase, SAR1 gene homolog A, SARA, SARA1 |
| Accession No. | Swiss-Prot#: Q9NR31NCBI Gene ID:56681 |
| Uniprot | Q9NR31 |
| GeneID | 56681; |
| Calculated MW | 22 kDa |
| Concentration | 1.0mg/mL |
| Formulation | Liquid in PBS containing 50% glycerol, and 0.02% sodium azide. |
| Storage | Store at -20°C |

Application Details

Western blotting: 1:1000-3000

Images



Western blot analysis of lysates from K562 cells, primary antibody was diluted at 1:1000, 4o½ over night

Note: This product is for in vitro research use only