

MSS4 Antibody

Catalog No: #46002

Package Size: #46002-1 50ul #46002-2 100ul

Orders: order@signalwayantibody.com

Support: tech@signalwayantibody.com

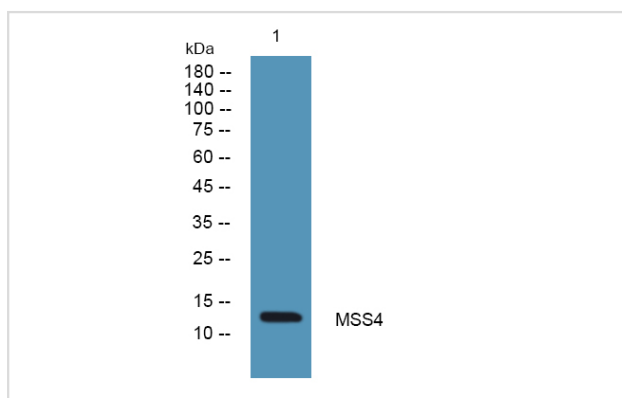
Description

Product Name	MSS4 Antibody
Host Species	Rabbit
Clonality	Polyclonal
Purification	Immunogen affinity purified
Applications	WB
Species Reactivity	Hu Ms Rt
Specificity	MSS4 Antibody detects endogenous levels of total MSS4
Immunogen Type	Peptide
Immunogen Description	A synthesized peptide derived from human MSS4
Target Name	MSS4
Other Names	RABIF, Mammalian suppressor of SEC4, MSS4, RASGFR3, RASGRF3, RAB interacting factor, Rab-interacting factor
Accession No.	Swiss-Prot#: P47224NCBI Gene ID:5877
Uniprot	P47224
GeneID	5877;
Calculated MW	14 kDa
Concentration	1.0mg/mL
Formulation	Liquid in PBS containing 50% glycerol, and 0.02% sodium azide.
Storage	Store at -20°C

Application Details

Western blotting: 1:1000-3000

Images



Western blot analysis of lysates from PC12 cells, primary antibody was diluted at 1:1000, 4o½ over night

Note: This product is for in vitro research use only