

## GUCA2B Antibody

Catalog No: #46011

Package Size: #46011-1 50ul #46011-2 100ul

Orders: [order@signalwayantibody.com](mailto:order@signalwayantibody.com)Support: [tech@signalwayantibody.com](mailto:tech@signalwayantibody.com)

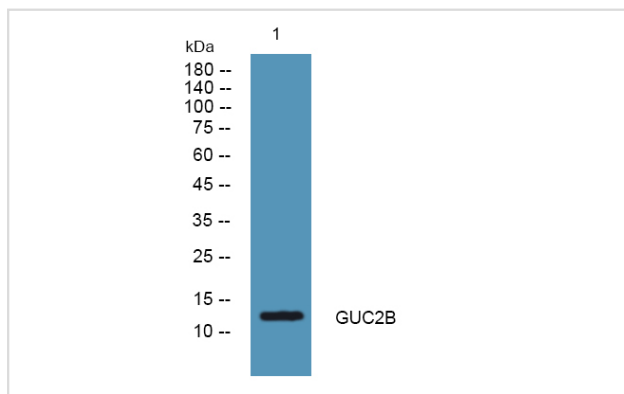
## Description

|                       |  |
|-----------------------|--|
| Product Name          | GUCA2B Antibody  |
| Host Species          | Rabbit   |
| Clonality             | Polyclonal   |
| Purification          | Immunogen affinity purified  |
| Applications          | WB   |
| Species Reactivity    | Hu   |
| Specificity           | GUCA2B Antibody detects endogenous levels of total GUCA2B  |
| Immunogen Type        | Peptide  |
| Immunogen Description | A synthesized peptide derived from human GUCA2B  |
| Target Name           | GUCA2B   |
| Other Names           | GUCA2B, Guanylate cyclase activator 2B, UGN, Uroguanylin, GCAP-II                                  |
| Accession No.         | Swiss-Prot#: Q16661NCBI Gene ID:2981   |
| Uniprot               | Q16661   |
| GeneID                | 2981;  |
| Calculated MW         | 12 kDa   |
| Concentration         | 1.0mg/mL   |
| Formulation           | Rabbit IgG in phosphate buffered saline , pH 7.4, 150mM NaCl, 0.02% sodium azide and 50% glycerol. |
| Storage               | Store at -20°C   |

## Application Details

Western blotting: 1:500-2000

## Images



---

Note: This product is for in vitro research use only