

NKX61 Antibody

Catalog No: #46022

Package Size: #46022-1 50ul #46022-2 100ul

Orders: order@signalwayantibody.com

Support: tech@signalwayantibody.com

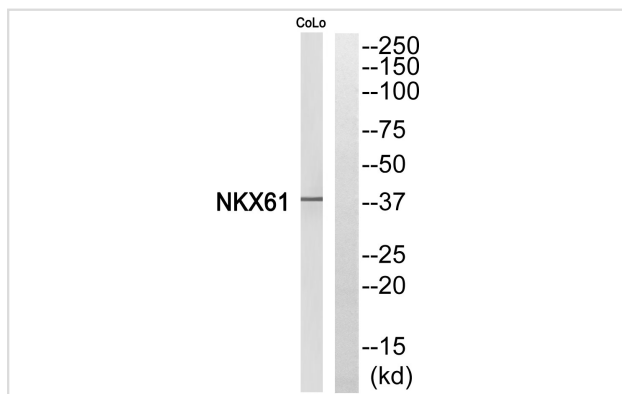
Description

Product Name	NKX61 Antibody
Host Species	Rabbit
Clonality	Polyclonal
Purification	Immunogen affinity purified
Applications	WB
Species Reactivity	Hu Ms Rt
Specificity	NKX61 Antibody detects endogenous levels of total NKX61
Immunogen Type	Peptide
Immunogen Description	A synthesized peptide derived from human NKX61
Target Name	NKX61
Other Names	NKX6-1, NKX6A, NK homeobox, family 6, A, NK6 homeobox 1, Homeobox protein Nkx-6.1, NKX6.1
Accession No.	Swiss-Prot#: P78426NCBI Gene ID:4825
Uniprot	P78426
GeneID	4825;
Calculated MW	38 kDa
Concentration	1.0mg/mL
Formulation	Liquid in PBS containing 50% glycerol, 0.5% BSA and 0.02% sodium azide.
Storage	Store at -20°C

Application Details

Western blotting: 1:1000-3000

Images



Western blot analysis of NKX61 Antibody. The lane on the right is blocked with the NKX61 peptide.

Note: This product is for in vitro research use only