

SPPL2A Polyclonal Antibody

Catalog No: #29330

Package Size: #29330-1 50ul #29330-2 100ul

Orders: order@signalwayantibody.com

Support: tech@signalwayantibody.com

Description

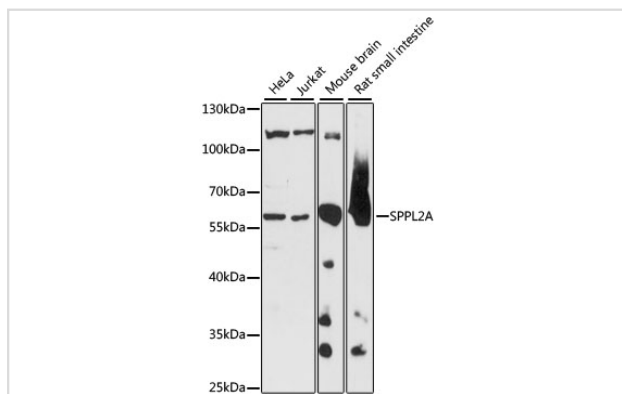
Product Name	SPPL2A Polyclonal Antibody
Host Species	Rabbit
Clonality	Polyclonal
Isotype	IgG
Purification	Affinity purification
Applications	WB,IHC
Species Reactivity	Human,Mouse,Rat
Immunogen Description	Recombinant fusion protein of human SPPL2A (NP_116191.2).
Other Names	SPPL2A;IMP3;PSL2
Accession No.	Uniprot:Q8TCT8GeneID:84888
Uniprot	Q8TCT8
GeneID	84888
Calculated MW	57kDa
SDS-PAGE MW	57kDa
Concentration	1.494 mg/mL
Formulation	PBS with 0.02% sodium azide,50% glycerol,pH7.3.
Storage	Store at -20°C. Avoid freeze / thaw cycles.

Application Details

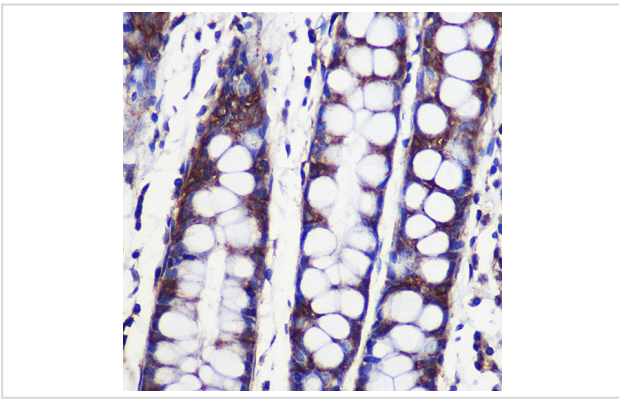
WB □ 1:200 - 1:2000

IHC □ 1:50 - 1:200

Images



Western blot analysis of extracts of various cell lines, using SPPL2A antibody.



Immunohistochemistry of paraffin-embedded Human colon using SPPL2A Rabbit pAb.

Background

This gene encodes a member of the GXGD family of aspartic proteases, which are transmembrane proteins with two conserved catalytic motifs localized within the membrane-spanning regions, as well as a member of the signal peptide peptidase-like protease (SPPL) family. This protein is expressed in all major adult human tissues and localizes to late endosomal compartments and lysosomal membranes. A pseudogene of this gene also lies on chromosome 15.

Note: This product is for in vitro research use only