

## LC3A / LC3B Polyclonal Antibody

Catalog No: #29357

Package Size: #29357-1 50ul #29357-2 100ul

Orders: order@signalwayantibody.com

Support: tech@signalwayantibody.com

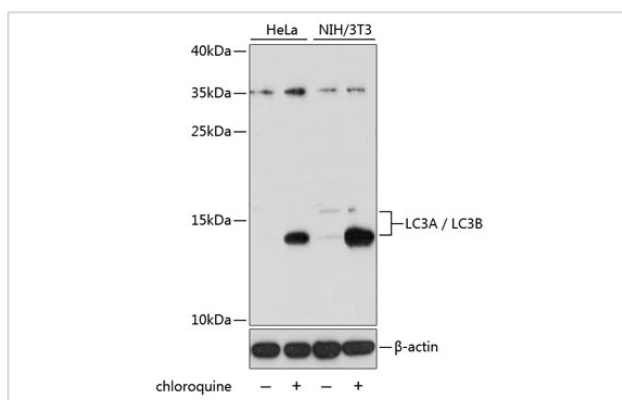
## Description

Product Name	LC3A / LC3B Polyclonal Antibody
Host Species	Rabbit
Clonality	Polyclonal
Isotype	IgG
Purification	Affinity purification
Applications	WB,IHC
Species Reactivity	Human,Mouse
Immunogen Description	Recombinant fusion protein of human LC3A / LC3B (NP_073729.1).
Other Names	MAP1LC3B;ATG8F;LC3B;MAP1A/1BLC3;MAP1LC3B-a;MAP1LC3A;ATG8E;LC3;LC3A;MAP1ALC3;MAP1BLC3;LC3A/LC3B
Accession No.	Uniprot:Q9GZQ8/Q9H492GeneID:84557/81631
Uniprot	Q9GZQ8/Q9H492
GeneID	84557/81631
Calculated MW	14kDa, 16kDa
SDS-PAGE MW	14kDa, 16kDa
Formulation	PBS with 0.02% sodium azide,50% glycerol,pH7.3.
Storage	Store at -20°C. Avoid freeze / thaw cycles.

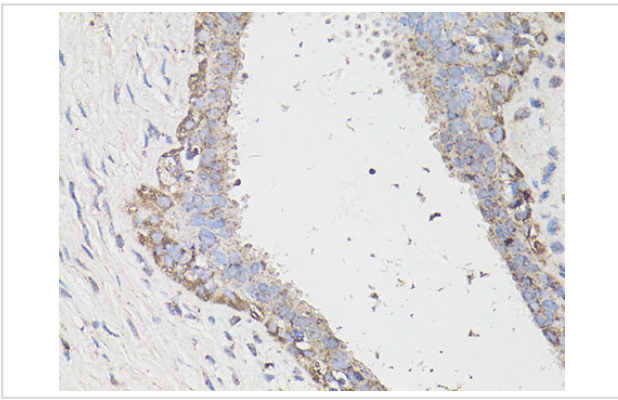
## Application Details

WB □ 1:500 - 1:2000 IHC □ 1:50 - 1:200

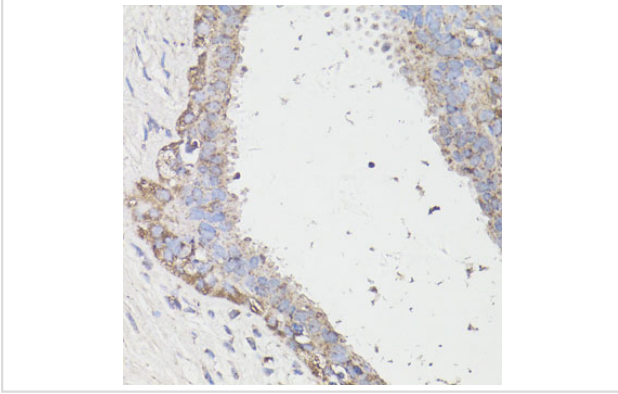
## Images



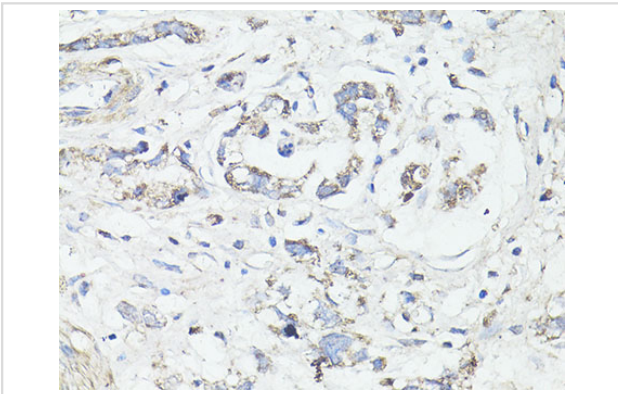
Western blot analysis of extracts of various cell lines, using LC3A/LC3B antibody.



Immunohistochemistry of paraffin-embedded human breast cancer using LC3A / LC3B antibody.



Immunohistochemistry of paraffin-embedded human mammary cancer using LC3A / LC3B antibody.



Immunohistochemistry of paraffin-embedded human gastric cancer using LC3A / LC3B antibody.

## Background

The product of this gene is a subunit of neuronal microtubule-associated MAP1A and MAP1B proteins, which are involved in microtubule assembly and important for neurogenesis. Studies on the rat homolog implicate a role for this gene in autophagy, a process that involves the bulk degradation of cytoplasmic component.

Note: This product is for in vitro research use only