

## KIR2DL5A Antibody

Catalog No: #46029

Package Size: #46029-1 50ul #46029-2 100ul

Orders: order@signalwayantibody.com

Support: tech@signalwayantibody.com

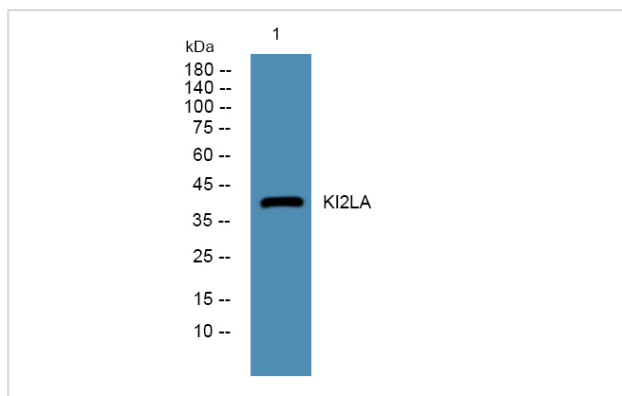
## Description

Product Name	KIR2DL5A Antibody
Host Species	Rabbit
Clonality	Polyclonal
Purification	Immunogen affinity purified
Applications	WB
Species Reactivity	Hu
Specificity	KIR2DL5A Antibody detects endogenous levels of total KIR2DL5A
Immunogen Type	Peptide
Immunogen Description	A synthesized peptide derived from human KIR2DL5A
Target Name	KIR2DL5A
Other Names	KIR2DL5A, CD158f1 antigen, CD158F, CD158F1, KIR2DL5.3, Killer-cell Ig-like receptor, KIR2DL5.1, KIR2DL5
Accession No.	Swiss-Prot#: Q8N109NCBI Gene ID:57292
Uniprot	Q8N109
GeneID	57292;
Calculated MW	41 kDa
Concentration	1.0mg/mL
Formulation	Liquid in PBS containing 50% glycerol, and 0.02% sodium azide.
Storage	Store at -20°C

## Application Details

Western blotting: 1:1000-3000

## Images



Western blot analysis of lysates from PC12 cells, primary antibody was diluted at 1:1000, 4o½ over night

---

Note: This product is for in vitro research use only