

MED11 Antibody

Catalog No: #46036

Package Size: #46036-1 50ul #46036-2 100ul

Orders: order@signalwayantibody.comSupport: tech@signalwayantibody.com

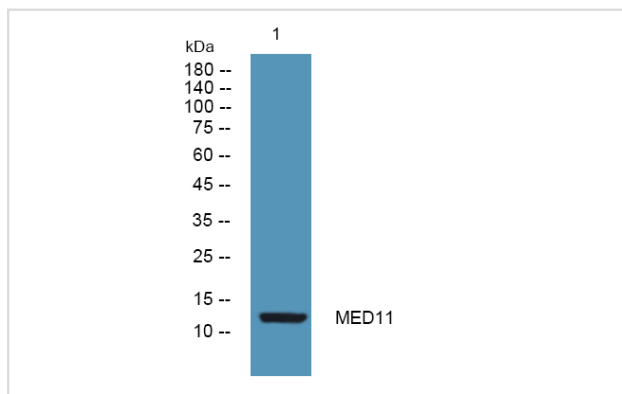
Description

Product Name	MED11 Antibody
Host Species	Rabbit
Clonality	Polyclonal
Purification	Immunogen affinity purified
Applications	WB
Species Reactivity	Hu Ms Rt
Specificity	MED11 Antibody detects endogenous levels of total MED11
Immunogen Type	Peptide
Immunogen Description	A synthesized peptide derived from human MED11
Target Name	MED11
Other Names	HSPC296
Accession No.	Swiss-Prot#: Q9P086NCBI Gene ID:400569
Uniprot	Q9P086
GeneID	400569;
Calculated MW	13 kDa
Concentration	1.0mg/mL
Formulation	Liquid in PBS containing 50% glycerol, and 0.02% sodium azide.
Storage	Store at -20°C

Application Details

Western blotting: 1:1000-3000

Images



Western blot analysis of lysates from SH-SY5Y cells, primary antibody was diluted at 1:1000, 4o½ over night

Note: This product is for in vitro research use only