

MED29 Antibody

Catalog No: #46037

Package Size: #46037-1 50ul #46037-2 100ul

Orders: order@signalwayantibody.comSupport: tech@signalwayantibody.com

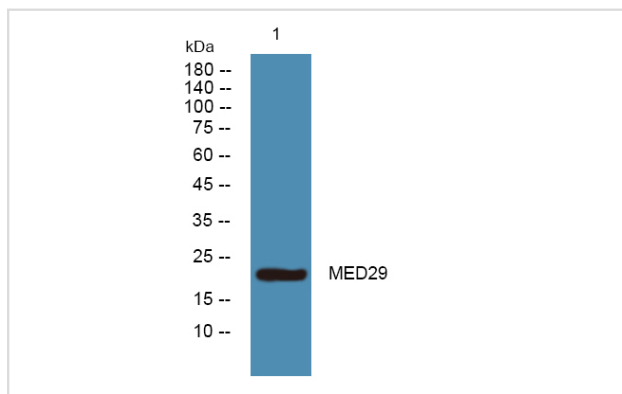
Description

Product Name	MED29 Antibody
Host Species	Rabbit
Clonality	Polyclonal
Purification	Immunogen affinity purified
Applications	WB
Species Reactivity	Hu Ms
Specificity	MED29 Antibody detects endogenous levels of total MED29
Immunogen Type	Peptide
Immunogen Description	A synthesized peptide derived from human MED29
Target Name	MED29
Other Names	MED29, IXL, Intersex-like protein, Mediator complex subunit 29, Intersex-like (Drosophila)
Accession No.	Swiss-Prot#: Q9NX70NCBI Gene ID:55588
Uniprot	Q9NX70
GeneID	55588;
Calculated MW	21 kDa
Concentration	1.0mg/mL
Formulation	Liquid in PBS containing 50% glycerol, and 0.02% sodium azide.
Storage	Store at -20°C

Application Details

Western blotting: 1:1000-3000

Images



Note: This product is for in vitro research use only