

## MOT6 Antibody

Catalog No: #46052

Package Size: #46052-1 50ul #46052-2 100ul

Orders: [order@signalwayantibody.com](mailto:order@signalwayantibody.com)Support: [tech@signalwayantibody.com](mailto:tech@signalwayantibody.com)

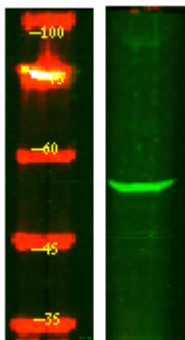
## Description

Product Name	MOT6 Antibody
Host Species	Rabbit
Clonality	Polyclonal
Purification	Immunogen affinity purified
Applications	WB
Species Reactivity	Hu Ms Rt
Specificity	MOT6 Antibody detects endogenous levels of total MOT6
Immunogen Type	Peptide
Immunogen Description	A synthesized peptide derived from human MOT6
Target Name	MOT6
Other Names	SLC16A5, MCT 5, MCT 6, MCT5, MCT6, Monocarboxylate transporter 5, Monocarboxylate transporter 6
Accession No.	Swiss-Prot#: O15375NCBI Gene ID:9121
Uniprot	O15375
GeneID	9121;
Calculated MW	55 kDa
Concentration	1.0mg/mL
Formulation	Liquid in PBS containing 50% glycerol, and 0.02% sodium azide.
Storage	Store at -20°C

## Application Details

Western blotting: 1:1000-3000

## Images



Western Blot analysis of HEK293 lysates, using primary antibody at 1:1000 dilution.

---

Note: This product is for in vitro research use only