

PIMREG Polyclonal Antibody

Catalog No: #29782

Package Size: #29782-1 50ul #29782-2 100ul

Orders: order@signalwayantibody.comSupport: tech@signalwayantibody.com

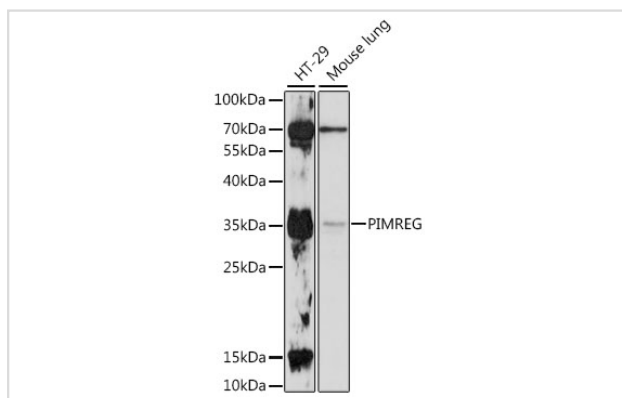
Description

Product Name	PIMREG Polyclonal Antibody
Host Species	Rabbit
Clonality	Polyclonal
Isotype	IgG
Purification	Affinity purification
Applications	WB,IHC,IF
Species Reactivity	Human,Mouse
Immunogen Description	Recombinant fusion protein of human PIMREG (NP_001182157).
Other Names	PIMREG; CATS; FAM64A; RCS1; protein FAM64A
Accession No.	Swiss-Prot#:Q9BSJ6NCBI Gene ID:54478
Uniprot	Q9BSJ6
GeneID	54478;
Calculated MW	35kDa
Formulation	Avoid freeze / thaw cycles. Buffer: PBS with 50% glycerol, pH7.4.
Storage	Store at -20°C

Application Details

WB □ 1:500 - 1:2000 IHC □ 1:50 - 1:200 IF □ 1:50 - 1:200

Images



Western blot analysis of extracts of various cell lines, using PIMREG at 1:500 dilution.

Background

Note: This product is for in vitro research use only