

MRP6 Antibody

Catalog No: #46058

Orders: order@signalwayantibody.com

Support: tech@signalwayantibody.com

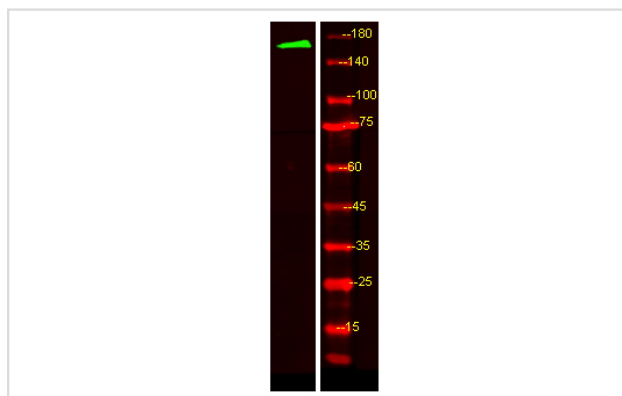
Description

Product Name	MRP6 Antibody
Host Species	Rabbit
Clonality	Polyclonal
Purification	Immunogen affinity purified
Applications	WB
Species Reactivity	Hu Ms Rt
Specificity	MRP6 Antibody detects endogenous levels of total MRP6
Immunogen Type	Peptide
Immunogen Description	A synthesized peptide derived from human MRP6
Target Name	MRP6
Other Names	ABCC6, ABC34, EST349056, MLP1, MOAT-E, MRP6, MOATE, URG7, PXE1, ARA, GAC12, Pseudoxanthoma elasticum, PXE
Accession No.	Swiss-Prot#: O95255NCBI Gene ID:368
Uniprot	O95255
GeneID	368;
Calculated MW	165 kDa
Concentration	1.0mg/mL
Formulation	Liquid in PBS containing 50% glycerol, and 0.02% sodium azide.
Storage	Store at -20°C

Application Details

Western blotting: 1:1000-3000

Images



Western Blot analysis of HEK293 lysates, using primary antibody at 1:1000 dilution.

Note: This product is for in vitro research use only