

## FCN2 Polyclonal Antibody

Catalog No: #29937

Package Size: #29937-1 50ul #29937-2 100ul

Orders: order@signalwayantibody.com

Support: tech@signalwayantibody.com

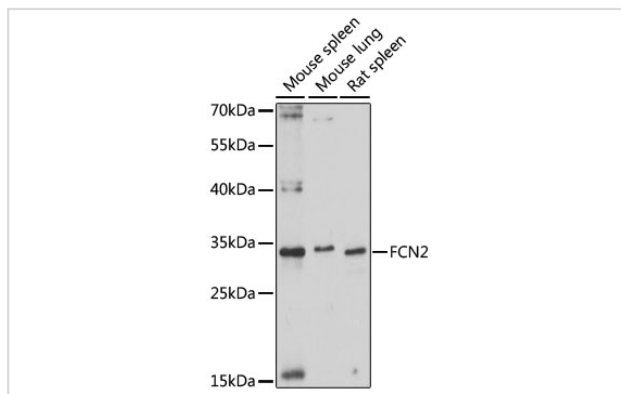
## Description

Product Name	FCN2 Polyclonal Antibody
Host Species	Rabbit
Clonality	Polyclonal
Isotype	IgG
Purification	Affinity purification
Applications	WB
Species Reactivity	Human,Mouse,Rat
Immunogen Description	Recombinant fusion protein of human FCN2 (NP_004099.2).
Other Names	FCN2; EBP-37; FCNL; P35; ficolin-2
Accession No.	Swiss-Prot#:Q15485NCBI Gene ID:2220
Uniprot	Q15485
GeneID	2220;
Calculated MW	34kDa
Concentration	0.74 mg/ml
Formulation	PBS with 0.01% thimerosal,50% glycerol,pH7.3.
Storage	Store at -20°C. Avoid freeze / thaw cycles.

## Application Details

WB 1:500 - 1:2000

## Images



Western blot analysis of extracts of various cell lines, using FCN2 at 1:1000 dilution.

## Background

The product of this gene belongs to the ficolin family of proteins. This family is characterized by the presence of a leader peptide, a short N-terminal segment, followed by a collagen-like region, and a C-terminal fibrinogen-like domain. This gene is predominantly expressed in the liver, and has been shown to have carbohydrate binding and opsonic activities. Alternatively spliced transcript variants encoding different isoforms have been identified.

---

Note: This product is for in vitro research use only