

## GIMAP8 antibody

Catalog No: #23172

Orders: [order@signalwayantibody.com](mailto:order@signalwayantibody.com)Support: [tech@signalwayantibody.com](mailto:tech@signalwayantibody.com)

## Description

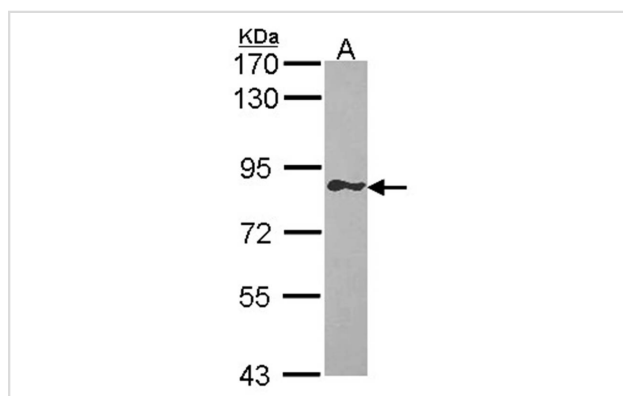
Product Name	GIMAP8 antibody
Host Species	Rabbit
Clonality	Polyclonal
Purification	Purified by antigen-affinity chromatography.
Applications	WB
Species Reactivity	Hu
Immunogen Type	Peptide
Immunogen Description	Synthetic peptide contain a sequence corresponding to a region within amino acids 352 and 413 of GIMAP8
Target Name	GIMAP8
Accession No.	Swiss-Prot:Q8ND71 Gene ID:155038
Uniprot	Q8ND71
GeneID	155038;
Concentration	1mg/ml
Formulation	Supplied in 0.1M Tris-buffered saline with 10% Glycerol (pH7.0). 0.01% Thimerosal was added as a preservative.
Storage	Store at -20°C for long term preservation (recommended). Store at 4°C for short term use.

## Application Details

Predicted MW: 75kd

Western blotting: 1:500-1:3000

## Images



Sample (30 ug of whole cell lysate)

A: Raji

7.5% SDS PAGE

GIMAP8 antibody diluted at 1: 1000

## Background

This gene encodes a protein belonging to the GTP-binding superfamily and to the immuno-associated nucleotide (IAN) subfamily of nucleotide-binding proteins. In humans, the IAN subfamily genes are located in a cluster at 7q36.1. [provided by RefSeq]

---

Note: This product is for in vitro research use only