

Gasdermin-D Polyclonal Antibody

Catalog No: #30392

Package Size: #30392-1 50ul #30392-2 100ul

Orders: order@signalwayantibody.comSupport: tech@signalwayantibody.com

Description

| | |
|-----------------------|---|
| Product Name | Gasdermin-D Polyclonal Antibody |
| Host Species | Rabbit |
| Clonality | Polyclonal |
| Isotype | IgG |
| Purification | Affinity purification |
| Applications | WB,IHC,IF |
| Species Reactivity | Human,Mouse,Rat |
| Immunogen Description | Recombinant protein of human GSDMD. |
| Other Names | DF5L;DFNA5L;FKSG10;GSDMDC1;GSDMD |
| Accession No. | Uniprot:P57764GenelD:79792 |
| Uniprot | P57764 |
| GeneID | 79792 |
| Calculated MW | Refer to figures |
| SDS-PAGE MW | 53KDa |
| Formulation | PBS with 0.02% sodium azide,50% glycerol,pH7.3. |
| Storage | Store at -20°C. Avoid freeze / thaw cycles. |

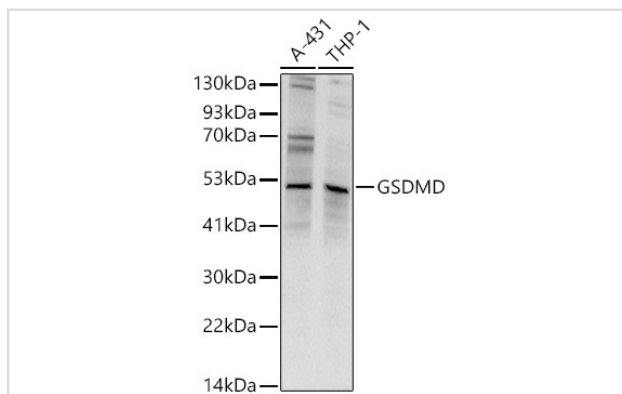
Application Details

WB □ 1:500 - 1:2000

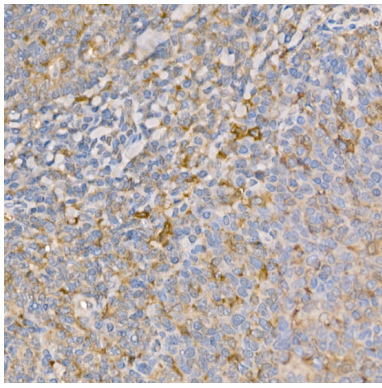
IHC □ 1:50 - 1:200

IF □ 1:50 - 1:200

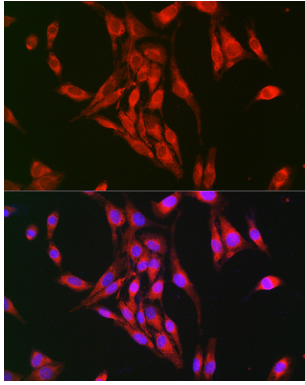
Images



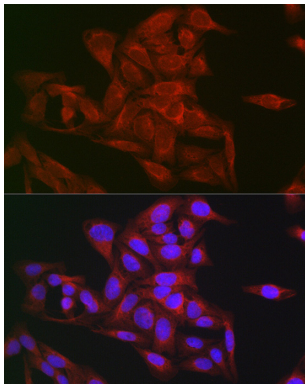
Western blot analysis of extracts of various cell lines, using GSDMD antibody.



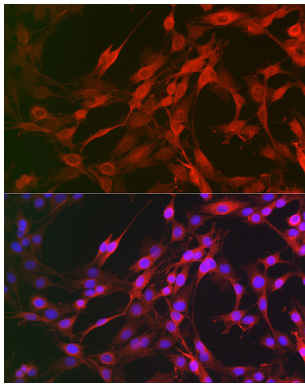
Immunohistochemistry of paraffin-embedded human tonsil using GSDMD (Full Length+N terminal) Rabbit pAb.



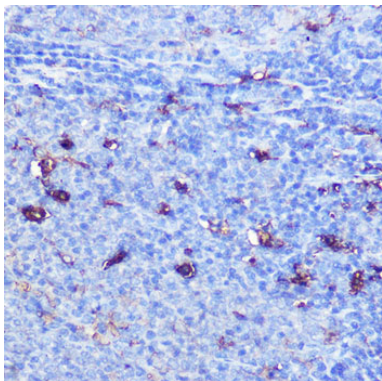
Immunofluorescence analysis of BALB-3T3 cells using GSDMD Rabbit pAb.



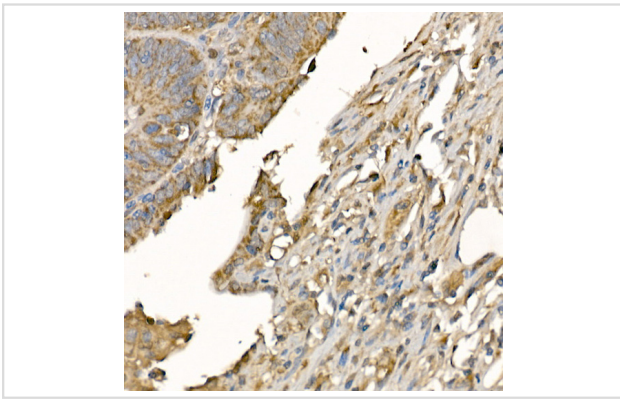
Immunofluorescence analysis of U-2 OS cells using GSDMD Rabbit pAb.



Immunofluorescence analysis of C6 cells using GSDMD Rabbit pAb.



Immunohistochemistry of paraffin-embedded rat spleen using GSDMD Rabbit pAb.



Immunohistochemistry of paraffin-embedded human colon carcinoma using GSDMD (Full Length+N terminal) Rabbit pAb.

Background

Gasdermin D is a member of the gasdermin family. Members of this family appear to play a role in regulation of epithelial proliferation. Gasdermin D has been suggested to act as a tumor suppressor. Alternatively spliced transcript variants have been described.

Note: This product is for in vitro research use only