

## CRYM Polyclonal Antibody

Catalog No: #30491

Package Size: #30491-1 50ul #30491-2 100ul

Orders: [order@signalwayantibody.com](mailto:order@signalwayantibody.com)Support: [tech@signalwayantibody.com](mailto:tech@signalwayantibody.com)

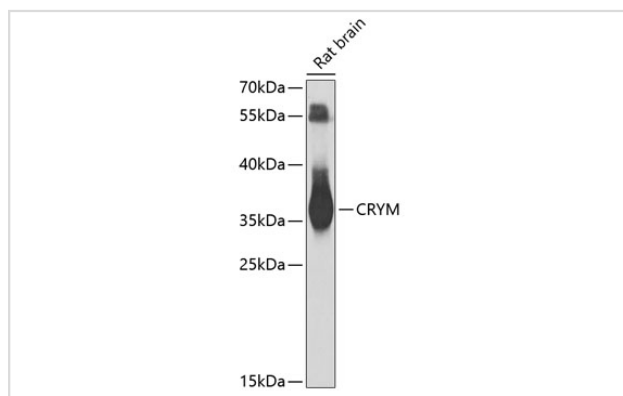
## Description

Product Name	CRYM Polyclonal Antibody
Host Species	Rabbit
Clonality	Polyclonal
Isotype	IgG
Purification	Affinity purification
Applications	WB
Species Reactivity	Human,Mouse,Rat
Immunogen Description	Recombinant fusion protein of human CRYM (NP_001879.1).
Other Names	CRYM;DFNA40;THBP
Accession No.	Uniprot:Q14894GeneID:1428
Uniprot	Q14894
GeneID	1428
Calculated MW	36kDa
SDS-PAGE MW	36kDa
Formulation	PBS with 0.02% sodium azide,50% glycerol,pH7.3.
Storage	Store at -20°C. Avoid freeze / thaw cycles.

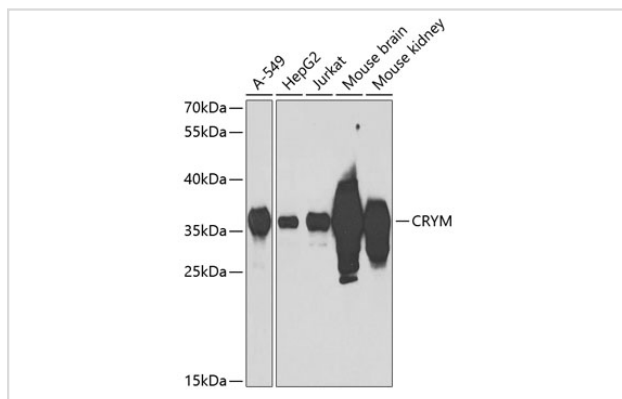
## Application Details

WB□1:500 - 1:2000

## Images



Western blot analysis of extracts of rat brain, using CRYM antibody.



Western blot analysis of extracts of various cell lines, using CRYM antibody.

## Background

Crystallins are separated into two classes: taxon-specific and ubiquitous. The former class is also called phylogenetically-restricted crystallins. The latter class constitutes the major proteins of vertebrate eye lens and maintains the transparency and refractive index of the lens. This gene encodes a taxon-specific crystallin protein that binds NADPH and has sequence similarity to bacterial ornithine cyclodeaminases. The encoded protein does not perform a structural role in lens tissue, and instead it binds thyroid hormone for possible regulatory or developmental roles. Mutations in this gene have been associated with autosomal dominant non-syndromic deafness.

Note: This product is for in vitro research use only