

PRPF38B Antibody

Catalog No: #46148

Package Size: #46148-1 50ul #46148-2 100ul

Orders: order@signalwayantibody.com

Support: tech@signalwayantibody.com

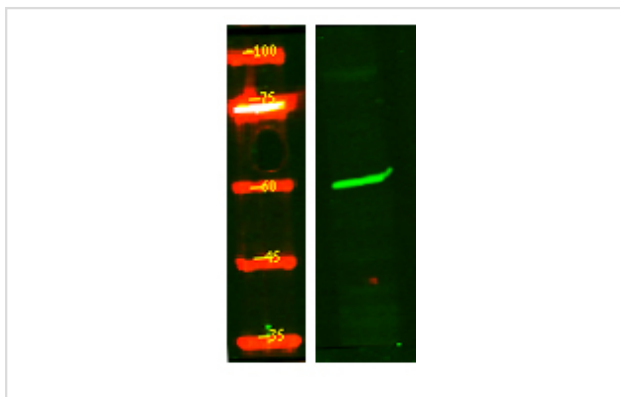
Description

Product Name	PRPF38B Antibody
Host Species	Rabbit
Clonality	Polyclonal
Purification	Immunogen affinity purified
Applications	WB
Species Reactivity	Hu Ms Rt
Specificity	PRPF38B Antibody detects endogenous levels of total PRPF38B
Immunogen Type	Peptide
Immunogen Description	A synthesized peptide derived from human PRPF38B
Target Name	PRPF38B
Other Names	Pre-mRNA-splicing factor 38B Sarcoma antigen NY-SAR-27
Accession No.	Swiss-Prot#: Q5VTL8NCBI Gene ID:55119
Uniprot	Q5VTL8
GeneID	55119;
Calculated MW	64 kDa
Concentration	1.0mg/mL
Formulation	Liquid in PBS containing 50% glycerol, and 0.02% sodium azide.
Storage	Store at -20°C

Application Details

Western blotting: 1:1000-3000

Images



Western Blot analysis of HEK293 lysates, using primary antibody at 1:1000 dilution.

Note: This product is for in vitro research use only