

RAB28 Antibody

Catalog No: #46181

Package Size: #46181-1 50ul #46181-2 100ul

Orders: order@signalwayantibody.comSupport: tech@signalwayantibody.com

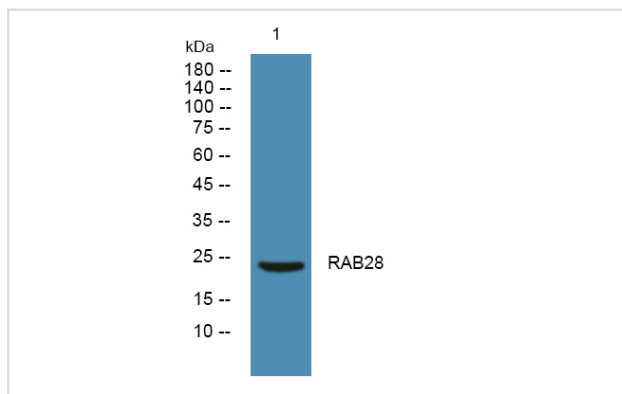
Description

Product Name	RAB28 Antibody
Host Species	Rabbit
Clonality	Polyclonal
Purification	Immunogen affinity purified
Applications	WB
Species Reactivity	Hu Ms Rt
Specificity	RAB28 Antibody detects endogenous levels of total RAB28
Immunogen Type	Peptide
Immunogen Description	A synthesized peptide derived from human RAB28
Target Name	RAB28
Other Names	RAB28, Ras-related protein Rab-28
Accession No.	Swiss-Prot#: P51157NCBI Gene ID:9364
Uniprot	P51157
GeneID	9364;
Calculated MW	25 kDa
Concentration	1.0mg/mL
Formulation	Liquid in PBS containing 50% glycerol, and 0.02% sodium azide.
Storage	Store at -20°C

Application Details

Western blotting: 1:1000-3000

Images



Note: This product is for in vitro research use only