

RAB32 Antibody

Catalog No: #46183

Package Size: #46183-1 50ul #46183-2 100ul

Orders: order@signalwayantibody.com

Support: tech@signalwayantibody.com

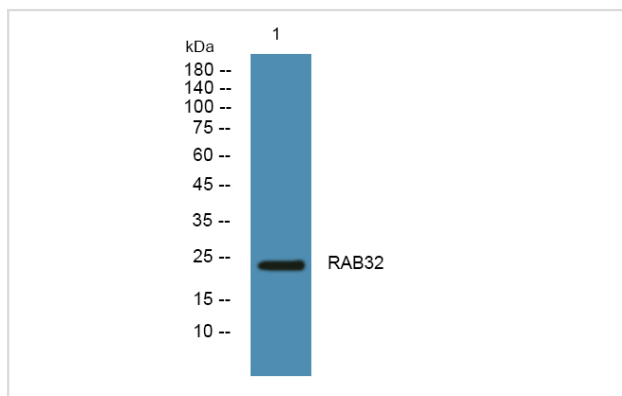
Description

Product Name	RAB32 Antibody
Host Species	Rabbit
Clonality	Polyclonal
Purification	The antibody was affinity-purified from rabbit antiserum by affinity-chromatography using epitope-specific immunogen.
Applications	WB
Species Reactivity	Human;Mouse
Specificity	RAB32 Polyclonal Antibody detects endogenous levels of protein.
Immunogen Type	Peptide
Immunogen Description	A synthesized peptide derived from human RAB32
Target Name	RAB32
Other Names	RAB32, Ras-related protein Rab-32
Accession No.	Swiss-Prot#: Q13637NCBI Gene ID:10981
Uniprot	Q13637
GeneID	10981;
Calculated MW	25 kDa
Concentration	1.0mg/mL
Formulation	Liquid in PBS containing 50% glycerol, and 0.02% sodium azide.
Storage	Store at -20°C

Application Details

WB 1:500-2000

Images



Western blot analysis of lysates from SH-SY5Y cells, primary antibody was diluted at 1:1000, 4o½ over night

Note: This product is for in vitro research use only