

RAB43 Antibody

Catalog No: #46190

Package Size: #46190-1 50ul #46190-2 100ul

Orders: order@signalwayantibody.comSupport: tech@signalwayantibody.com

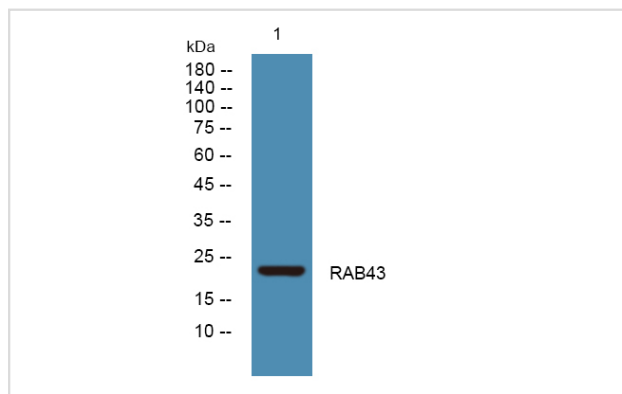
Description

Product Name	RAB43 Antibody
Host Species	Rabbit
Clonality	Polyclonal
Purification	Immunogen affinity purified
Applications	WB
Species Reactivity	Hu
Specificity	RAB43 Antibody detects endogenous levels of total RAB43
Immunogen Type	Peptide
Immunogen Description	A synthesized peptide derived from human RAB43
Target Name	RAB43
Other Names	RAB43, Ras-related protein Rab-41, Ras-related protein Rab-43
Accession No.	Swiss-Prot#: Q86YS6NCBI Gene ID:339122
Uniprot	Q86YS6
GeneID	339122;
Calculated MW	23 kDa
Concentration	1.0mg/mL
Formulation	Liquid in PBS containing 50% glycerol, and 0.02% sodium azide.
Storage	Store at -20°C

Application Details

Western blotting: 1:1000-3000

Images



Note: This product is for in vitro research use only