

SLC13A2 Polyclonal Antibody

Catalog No: #31559

Package Size: #31559-1 50ul #31559-2 100ul

Orders: order@signalwayantibody.com

Support: tech@signalwayantibody.com

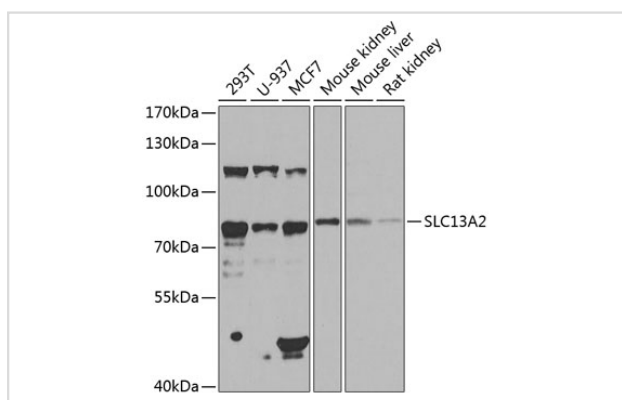
Description

Product Name	SLC13A2 Polyclonal Antibody
Host Species	Rabbit
Clonality	Polyclonal
Isotype	IgG
Purification	Affinity purification
Applications	WB
Species Reactivity	Human,Mouse,Rat
Immunogen Description	Recombinant fusion protein of human SLC13A2 (NP_003975.1).
Other Names	SLC13A2; NADC1; NaCT; NaDC-1; SDCT1; solute carrier family 13 member 2
Accession No.	Swiss-Prot#:Q13183NCBI Gene ID:9058
Uniprot	Q13183
GeneID	9058;
Calculated MW	65KD
Formulation	Avoid freeze / thaw cycles. Buffer: PBS with 50% glycerol, pH7.4.
Storage	Store at -20°C

Application Details

WB □ 1:500 - 1:2000

Images



Western blot analysis of extracts of various cell lines, using SLC13A2 at 1:1000 dilution.

Background

The protein encoded by this gene is a sodium-coupled citrate transporter that is regulated by the chaperone activity of cyclophilin b. The encoded protein may play a role in the formation of kidney stones.

Note: This product is for in vitro research use only