

RHG23 Antibody

Catalog No: #46202

Package Size: #46202-1 50ul #46202-2 100ul

Orders: order@signalwayantibody.com

Support: tech@signalwayantibody.com

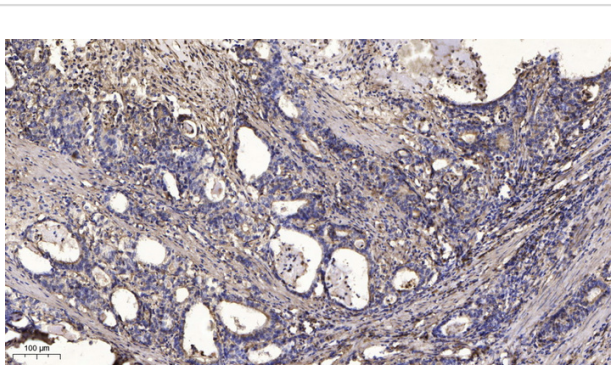
Description

Product Name	RHG23 Antibody
Host Species	Rabbit
Clonality	Polyclonal
Purification	Immunogen affinity purified
Applications	WB
Species Reactivity	Hu
Specificity	RHG23 Antibody detects endogenous levels of total RHG23
Immunogen Type	Peptide
Immunogen Description	A synthesized peptide derived from human RHG23
Target Name	RHG23
Other Names	Rho GTPase-activating protein23 Rho-type GTPase-activating protein23, KIAA1501
Accession No.	Swiss-Prot#: Q9P227NCBI Gene ID:57636
Uniprot	Q9P227
GeneID	57636;
Calculated MW	162 kDa
Concentration	1.0mg/mL
Formulation	Rabbit IgG in phosphate buffered saline , pH 7.4, 150mM NaCl, 0.02% sodium azide and 50% glycerol.
Storage	Store at -20°C

Application Details

Western blotting: 1:1000-3000

Images



Immunohistochemical analysis of paraffin-embedded human Gastric adenocarcinoma. 1, Antibody was diluted at 1:200(4° overnight). 2, Tris-EDTA,pH9.0 was used for antigen retrieval. 3,Secondary antibody was diluted at 1:200(room temperature, 45min).

Note: This product is for in vitro research use only