

MICB Polyclonal Antibody

Catalog No: #31739



Package Size: #31739-1 50ul #31739-2 100ul

Orders: order@signalwayantibody.com
Support: tech@signalwayantibody.com

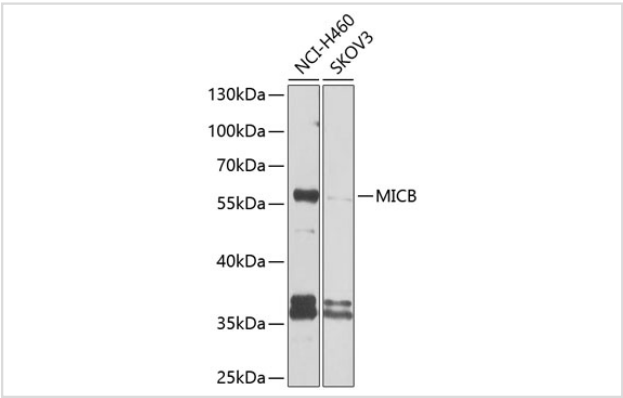
Description

| | |
|-----------------------|---|
| Product Name | MICB Polyclonal Antibody |
| Host Species | Rabbit |
| Clonality | Polyclonal |
| Isotype | IgG |
| Purification | Affinity purification |
| Applications | WB |
| Species Reactivity | Human |
| Immunogen Description | Recombinant fusion protein of human MICB (NP_005922.2). |
| Other Names | MICB; PERB11.2; MHC class I polypeptide-related sequence B |
| Accession No. | Swiss-Prot#:Q29980NCBI Gene ID:4277 |
| Uniprot | Q29980 |
| GeneID | 4277; |
| Calculated MW | 60kDa |
| Formulation | Avoid freeze / thaw cycles. Buffer: PBS with 50% glycerol, pH7.4. |
| Storage | Store at -20°C |

Application Details

WB 1:500 - 1:2000

Images



Western blot analysis of extracts of various cell lines, using MICB at 1:1000 dilution.

Background

This gene encodes a heavily glycosylated protein which is a ligand for the NKG2D type II receptor. Binding of the ligand activates the cytolytic response of natural killer (NK) cells, CD8 alphabeta T cells, and gammadelta T cells which express the receptor. This protein is stress-induced and is similar to MHC class I molecules; however, it does not associate with beta-2-microglobulin or bind peptides. Alternative splicing results in multiple transcript variants.

Note: This product is for in vitro research use only