

cyclin I family, member 2 antibody

Catalog No: #23185

Orders: order@signalwayantibody.com

Support: tech@signalwayantibody.com

Description

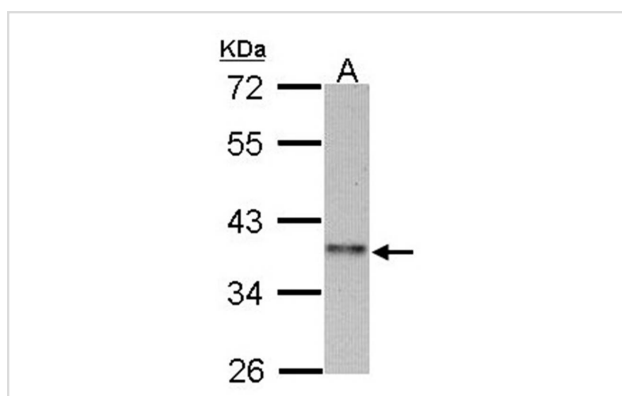
Product Name	cyclin I family, member 2 antibody
Host Species	Rabbit
Clonality	Polyclonal
Purification	Purified by antigen-affinity chromatography.
Applications	WB
Species Reactivity	Hu
Immunogen Type	Recombinant protein
Immunogen Description	Recombinant protein fragment contain a sequence corresponding to a region within amino acids 170 and 356 of human CCNI2
Target Name	cyclin I family, member 2
Accession No.	Swiss-Prot:Q6ZMN8Gene ID:645121
Uniprot	Q6ZMN8
GeneID	645121;
Concentration	1mg/ml
Formulation	Supplied in 0.1M Tris-buffered saline with 10% Glycerol (pH7.0). 0.01% Thimerosal was added as a preservative.
Storage	Store at -20°C for long term preservation (recommended). Store at 4°C for short term use.

Application Details

Predicted MW: 41kd

Western blotting: 1:500-1:3000

Images



Sample (30 ug of whole cell lysate)

A: 293T

10% SDS PAGE

Primary antibody diluted at 1: 1000

Note: This product is for in vitro research use only