

SLC9A10 Antibody

Catalog No: #46254

Package Size: #46254-1 50ul #46254-2 100ul

Orders: order@signalwayantibody.comSupport: tech@signalwayantibody.com

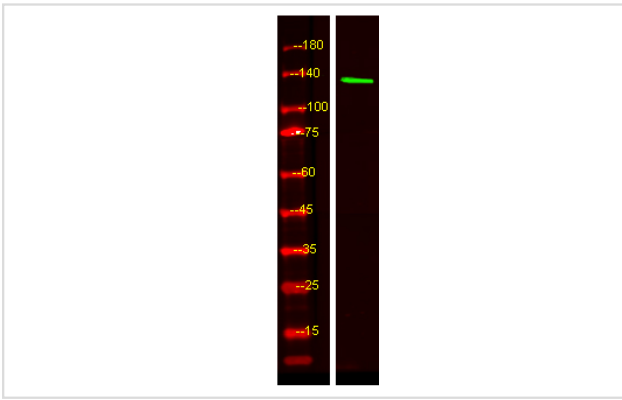
Description

Product Name	SLC9A10 Antibody
Host Species	Rabbit
Clonality	Polyclonal
Purification	Immunogen affinity purified
Applications	WB
Species Reactivity	Hu
Specificity	SLC9A10 Antibody detects endogenous levels of total SLC9A10
Immunogen Type	Peptide
Immunogen Description	A synthesized peptide derived from human SLC9A10
Target Name	SLC9A10
Other Names	odium/hydrogen exchanger 10 Alternative name(s): Na(+)/H(+) exchanger 10 NHE-10 Solute carrier family 9 member 10 Solute carrier family 9 member C1 Sperm-specific Na(+)/H(+) exchanger sNHEB- β -SLC9A10
Accession No.	Swiss-Prot#: Q4G0N8NCBI Gene ID:285335
Uniprot	Q4G0N8
GeneID	285335;
Calculated MW	135kDa
Concentration	1.0mg/mL
Formulation	Liquid in PBS containing 50% glycerol, and 0.02% sodium azide.
Storage	Store at -20°C

Application Details

Western blotting: 1:1000-3000

Images



Western Blot analysis of HEK293 lysates, using primary antibody at 1:1000 dilution.

Note: This product is for in vitro research use only