

SYT10 Antibody

Catalog No: #46269

Package Size: #46269-1 50ul #46269-2 100ul

Orders: order@signalwayantibody.com

Support: tech@signalwayantibody.com

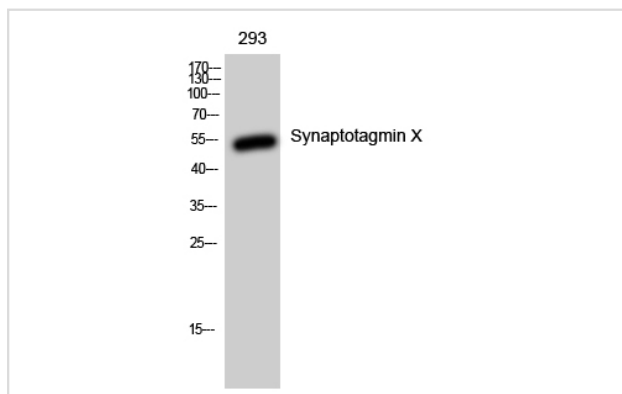
Description

Product Name	SYT10 Antibody
Host Species	Rabbit
Clonality	Polyclonal
Purification	Immunogen affinity purified
Applications	WB
Species Reactivity	Hu Ms Rt
Specificity	SYT10 Antibody detects endogenous levels of total SYT10
Immunogen Type	Peptide
Immunogen Description	A synthesized peptide derived from human SYT10
Target Name	SYT10
Other Names	SYT10, Synaptotagmin X, Synaptotagmin-10, SytX, Synaptotagmin 10
Accession No.	Swiss-Prot#: Q6XYQ8NCBI Gene ID:341359
Uniprot	Q6XYQ8
GeneID	341359;
Calculated MW	59 kDa
Concentration	1.0mg/mL
Formulation	Rabbit IgG in phosphate buffered saline , pH 7.4, 150mM NaCl, 0.02% sodium azide and 50% glycerol.
Storage	Store at -20°C

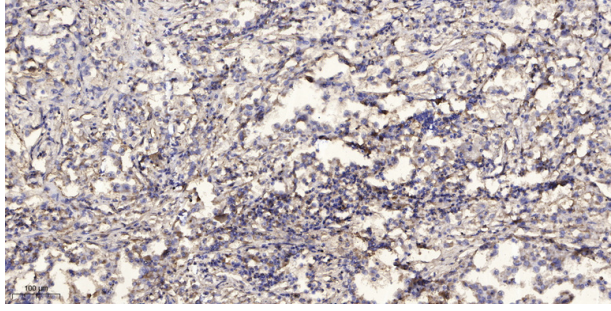
Application Details

Western blotting: 1:1000-3000

Images



Western Blot analysis of 293 cells using Synaptotagmin X Polyclonal Antibody



Immunohistochemical analysis of paraffin-embedded human Squamous cell carcinoma of lung. 1, Antibody was diluted at 1:200(4° overnight). 2, Tris-EDTA,pH9.0 was used for antigen retrieval. 3,Secondary antibody was diluted at 1:200(room temperature, 45min).

Note: This product is for in vitro research use only