

## TM2D1 Antibody

Catalog No: #46276

Package Size: #46276-1 50ul #46276-2 100ul

Orders: [order@signalwayantibody.com](mailto:order@signalwayantibody.com)Support: [tech@signalwayantibody.com](mailto:tech@signalwayantibody.com)

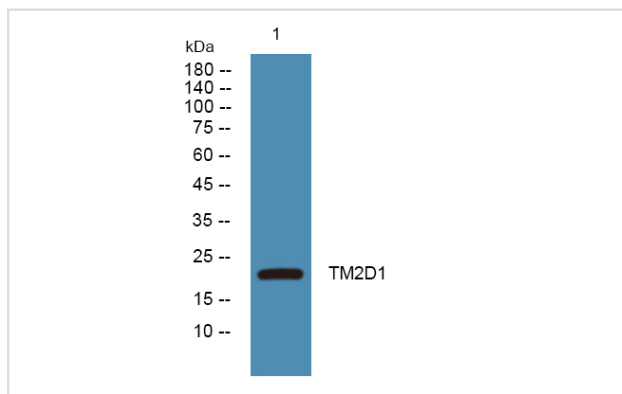
## Description

Product Name	TM2D1 Antibody
Host Species	Rabbit
Clonality	Polyclonal
Purification	Immunogen affinity purified
Applications	WB
Species Reactivity	Hu Ms Rt
Specificity	TM2D1 Antibody detects endogenous levels of total TM2D1
Immunogen Type	Peptide
Immunogen Description	A synthesized peptide derived from human TM2D1
Target Name	TM2D1
Other Names	TM2D1, Beta-amyloid-binding protein, BBP, TM2 domain containing 1, HBBP
Accession No.	Swiss-Prot#: Q9BX74NCBI Gene ID:83941
Uniprot	Q9BX74
GeneID	83941;
Calculated MW	22 kDa
Concentration	1.0mg/mL
Formulation	Liquid in PBS containing 50% glycerol, and 0.02% sodium azide.
Storage	Store at -20°C

## Application Details

Western blotting: 1:1000-3000

## Images



---

Note: This product is for in vitro research use only