

## Histone H3 (Tri-Methyl-K5) Polyclonal Antibody

Catalog No: #HW172

Package Size: #HW172-1 50ul #HW172-2 100ul

Orders: order@signalwayantibody.com

Support: tech@signalwayantibody.com

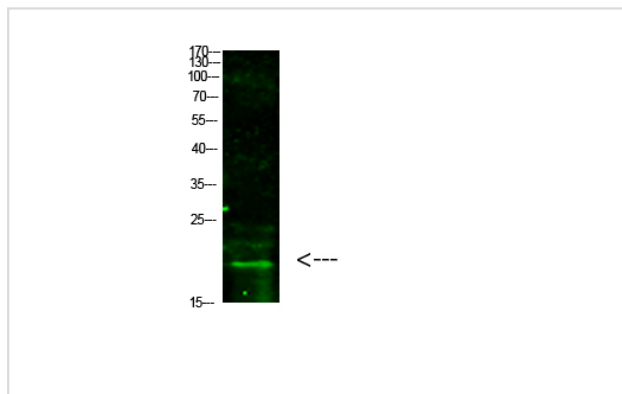
## Description

Product Name	Histone H3 (Tri-Methyl-K5) Polyclonal Antibody
Host Species	Rabbit
Clonality	Polyclonal
Purification	The antibody was affinity-purified from rabbit antiserum by affinity-chromatography using epitope-specific immunogen.
Applications	WB
Species Reactivity	Hu Ms Rt
Specificity	This antibody detects endogenous levels of Histone H3 (Tri-Methyl-K5), It doesn't react with total or Di-Methyl or Mono-Methyl protein.
Immunogen Type	protein
Immunogen Description	Synthesized Tri-Methyl peptide derived from human Histone H3. at AA range: K5
Target Name	Histone H3 (Tri-Methyl-K5)
Other Names	Histone H3
Accession No.	Swiss-Prot:P68431/Q71DI3/P84243/Q6NXT2/NCBI Gene ID:8350
Uniprot	P68431
GeneID	8350;8351;8352;8353;8354;8355;8356;8357;8358;8968;
Calculated MW	17 kDa
Concentration	1 mg/ml
Formulation	Liquid in PBS containing 50% glycerol, 0.5% BSA and 0.02% sodium azide.
Storage	Store at -20°C

## Application Details

Western blotting: 1B&amp;B1500-1B&amp;B12000

## Images



Western Blot analysis of HeLa cells using primary antibody diluted at 1:1000 (°C overnight). Secondary antibody B&B1Goat Anti-rabbit IgG IRDye 800 (diluted at 1:5000, 25B'1°C, 1 hour)

---

Note: This product is for in vitro research use only