

## Histone H3 (Di-Methyl-K80) Polyclonal Antibody

Catalog No: #HW173

Package Size: #HW173-1 50ul #HW173-2 100ul

Orders: order@signalwayantibody.com

Support: tech@signalwayantibody.com

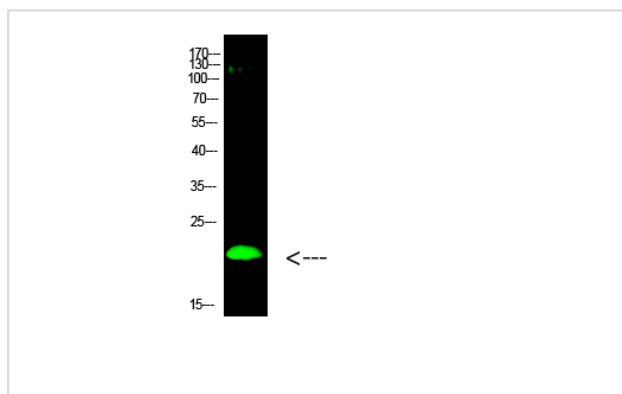
## Description

Product Name	Histone H3 (Di-Methyl-K80) Polyclonal Antibody
Host Species	Rabbit
Clonality	Polyclonal
Purification	The antibody was affinity-purified from rabbit antiserum by affinity-chromatography using epitope-specific immunogen.
Applications	WB
Species Reactivity	Hu Ms Rt
Specificity	This antibody detects endogenous levels of Histone H3 (Di-Methyl-K80), It doesn't reacte with total or Tri-Methyl or Mono-Methyl protein.
Immunogen Type	protein
Immunogen Description	Synthesized Tri-Methyl peptide derived from human Histone H3. at AA range: K80
Target Name	Histone H3 (Di-Methyl-K80)
Other Names	Histone H3
Accession No.	Swiss-Prot:P68431/Q71DI3/P84243/Q6NXT2NCBI Gene ID:8350
Uniprot	P68431
GeneID	8350;8351;8352;8353;8354;8355;8356;8357;8358;8968;
Calculated MW	17 kDa
Concentration	1 mg/ml
Formulation	Liquid in PBS containing 50% glycerol, 0.5% BSA and 0.02% sodium azide.
Storage	Store at -20°C

## Application Details

Western blotting: 1B£B1500-1B£B12000

## Images



Western Blot analysis of hela cells using primary antibody diluted at 1:1000(°C overnight). Secondary antibodyB£B1Goat Anti-rabbit IgG IRDye 800( diluted at 1:5000, 25B'££C, 1 hour)

---

Note: This product is for in vitro research use only