

Histone H2B (Acetyl-Lys24/25) Polyclonal Antibody

Catalog No: #HW177

Package Size: #HW177-1 50ul #HW177-2 100ul

Orders: order@signalwayantibody.com

Support: tech@signalwayantibody.com

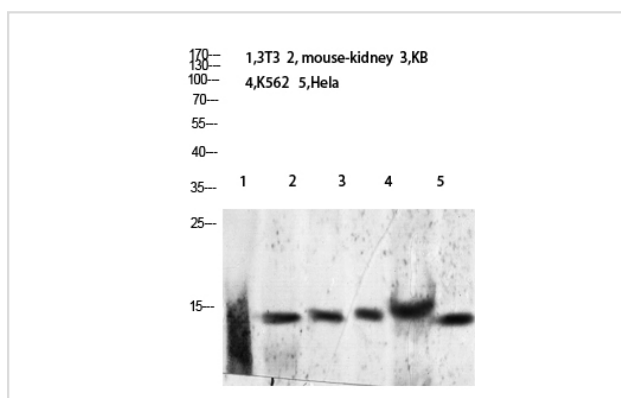
Description

| | |
|-----------------------|---|
| Product Name | Histone H2B (Acetyl-Lys24/25) Polyclonal Antibody |
| Host Species | Rabbit |
| Clonality | Polyclonal |
| Purification | The antibody was affinity-purified from rabbit serum by affinity-chromatography using specific immunogen. |
| Applications | WB |
| Species Reactivity | Hu Ms Rt |
| Specificity | The antibody detects endogenous Histone H2B when Acetyl occurs at Lys24 or 25) |
| Immunogen Type | protein |
| Immunogen Description | Synthetic Acetyl peptide from human protein at AA range: 24/25 |
| Target Name | Histone H2B (Acetyl-Lys24/25) |
| Accession No. | Swiss-Prot:Q96A08/P33778/P62807NCBI Gene ID:255626 |
| Uniprot | Q96A08 |
| GeneID | 255626; |
| Calculated MW | 15 kDa |
| Concentration | 1 mg/ml |
| Formulation | Liquid in PBS containing 50% glycerol, 0.5% BSA and 0.02% sodium azide. |
| Storage | Store at -20°C |

Application Details

Western blotting: 1B£B'1500-1B£B'12000

Images



Western blot analysis of K562 mouse-lung lysate, antibody was diluted at 2000. Secondary antibody was diluted at 1:20000

Note: This product is for in vitro research use only