

Tau (Acetyl Lys174) Polyclonal Antibody

Catalog No: #HW181

Package Size: #HW181-1 50ul #HW181-2 100ul

Orders: order@signalwayantibody.com

Support: tech@signalwayantibody.com

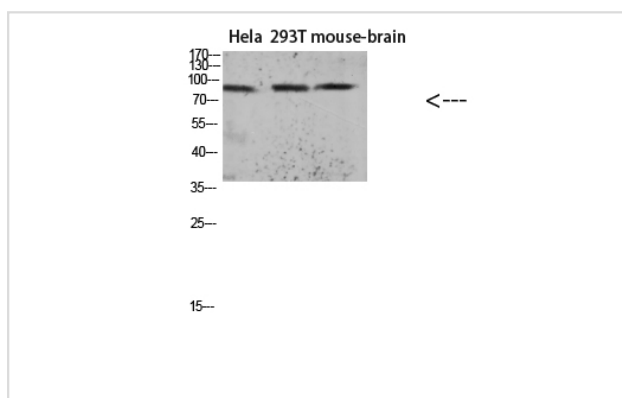
Description

Product Name	Tau (Acetyl Lys174) Polyclonal Antibody
Host Species	Rabbit
Clonality	Polyclonal
Purification	The antibody was affinity-purified from rabbit serum by affinity-chromatography using specific immunogen.
Applications	WB
Species Reactivity	Hu Ms Rt
Specificity	The antibody detects endogenous Tau when Acetyl occurs at Lys174
Immunogen Description	Synthetic Acetyl peptide from human protein at AA range: 174
Target Name	Tau (Acetyl Lys174)
Other Names	Microtubule-associated protein tau (Neurofibrillary tangle protein) (Paired helical filament-tau) (PHF-tau)
Accession No.	Swiss-Prot:P10636NCBI Gene ID:4137
Uniprot	P10636
GeneID	4137;
Calculated MW	50-85kD
Concentration	1 mg/ml
Formulation	Liquid in PBS containing 50% glycerol, 0.5% BSA and 0.02% sodium azide.
Storage	Store at -20°C

Application Details

Western blotting: 1&pound;&ordm;500-1&pound;&ordm;2000

Images



Western blot analysis of KB Hela lysate, antibody was diluted at 1000. Secondary antibody was diluted at 1:20000

Note: This product is for in vitro research use only