

PARP-1 (Acetyl-K521) Polyclonal Antibody

Catalog No: #HW188

Package Size: #HW188-1 50ul #HW188-2 100ul

Orders: order@signalwayantibody.com

Support: tech@signalwayantibody.com

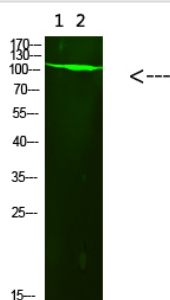
Description

Product Name	PARP-1 (Acetyl-K521) Polyclonal Antibody
Host Species	Rabbit
Clonality	Polyclonal
Purification	The antibody was affinity-purified from rabbit antiserum by affinity-chromatography using epitope-specific immunogen.
Applications	WB
Species Reactivity	Hu Ms Rt
Specificity	This antibody detects endogenous levels of PARP-1 (Acetyl-K521), It doesn't react with total protein.
Immunogen Type	protein
Immunogen Description	Synthesized Acetyl peptide derived from human PARP-1. at AA range: K521
Target Name	PARP-1 (Acetyl-K521)
Other Names	Poly [ADP-ribose] polymerase 1 (PARP-1) (EC 2.4.2.30) (ADP-ribosyltransferase diphtheria toxin-like 1) (ARTD1) (NAD(+) ADP-ribosyltransferase 1) (ADPRT 1) (Poly[ADP-ribose] synthase 1)
Accession No.	Swiss-Prot:P09874NCBI Gene ID:142
Uniprot	P09874
GeneID	142;
Calculated MW	113 kDa
Concentration	1 mg/ml
Formulation	Liquid in PBS containing 50% glycerol, 0.5% BSA and 0.02% sodium azide.
Storage	Store at -20°C

Application Details

Western blotting: 1B£B1500-1B£B12000

Images



Western Blot analysis of 1,293t 2, mouse-brain cells using primary antibody diluted at 1:1000(°C overnight). Secondary antibody B£B1Goat Anti-rabbit IgG IRDye 800(diluted at 1:5000, 25B'£C, 1 hour)

Note: This product is for in vitro research use only