

Rb (Acetyl-K873/K874) Polyclonal Antibody

Catalog No: #HW189

Package Size: #HW189-1 50ul #HW189-2 100ul

Orders: order@signalwayantibody.com

Support: tech@signalwayantibody.com

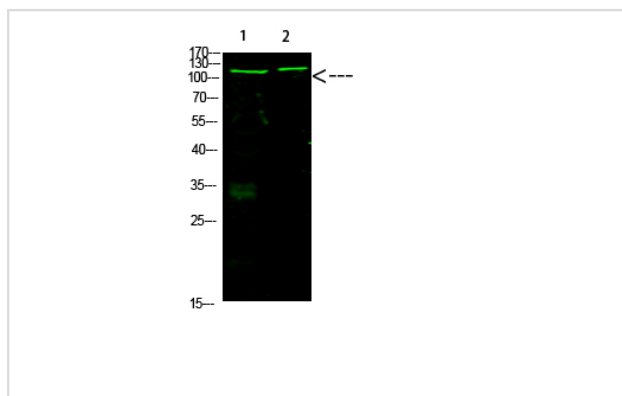
Description

| | |
|-----------------------|---|
| Product Name | Rb (Acetyl-K873/K874) Polyclonal Antibody |
| Host Species | Rabbit |
| Clonality | Polyclonal |
| Purification | The antibody was affinity-purified from rabbit antiserum by affinity-chromatography using epitope-specific immunogen. |
| Applications | WB |
| Species Reactivity | Hu Ms Rt |
| Specificity | This antibody detects endogenous levels of Rb (Acetyl-K873/K874), It doesn't reacte with total protein. |
| Immunogen Type | protein |
| Immunogen Description | Synthesized Acetyl peptide derived from human Rb. at AA range: K873/872 |
| Target Name | Rb (Acetyl-K873/K874) |
| Other Names | Retinoblastoma-associated protein (p105-Rb) (pRb) (Rb) (pp110) |
| Accession No. | Swiss-Prot:P06400NCBI Gene ID:5925 |
| Uniprot | P06400 |
| GeneID | 5925; |
| Calculated MW | 106 kDa |
| Concentration | 1 mg/ml |
| Formulation | Liquid in PBS containing 50% glycerol, 0.5% BSA and 0.02% sodium azide. |
| Storage | Store at -20°C |

Application Details

Western blotting: 1B£B1500-1B£B12000

Images



Western Blot analysis of 1,mouse-heart 3,mouse-brain cells using primary antibody diluted at 1:1000(°C overnight). Secondary antibodyB£B1Goat Anti-rabbit IgG IRDye 800(diluted at 1:5000, 25BTF£C, 1 hour)

Note: This product is for in vitro research use only