

AAT Polyclonal Antibody

Catalog No: #46726

Package Size: #46726-1 50ul #46726-2 100ul

Orders: order@signalwayantibody.comSupport: tech@signalwayantibody.com

Description

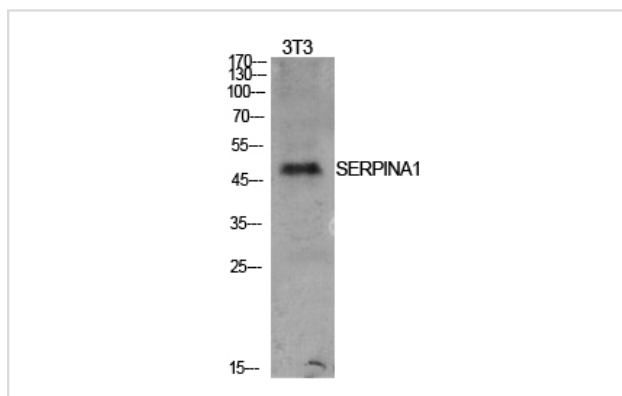
Product Name	AAT Polyclonal Antibody
Host Species	Rabbit
Clonality	Polyclonal
Purification	The antibody was affinity-purified from rabbit antiserum by affinity-chromatography using epitope-specific immunogen.
Applications	WB IHC
Species Reactivity	Hu
Specificity	AAT Polyclonal Antibody detects endogenous levels of AAT protein.
Immunogen Type	protein
Immunogen Description	Synthesized peptide derived from the N-terminal region of human AAT.
Target Name	AAT
Other Names	SERPINA1; AAT; PI; Alpha-1-antitrypsin; Alpha-1 protease inhibitor; Alpha-1-antiproteinase; Serpin A1
Accession No.	Swiss-Prot:P01009NCBI Gene ID:5265
Uniprot	P01009
GeneID	5265;
Calculated MW	47 kDa
Concentration	1 mg/ml
Formulation	Liquid in PBS containing 50% glycerol, 0.5% BSA and 0.02% sodium azide.
Storage	Store at -20°C

Application Details

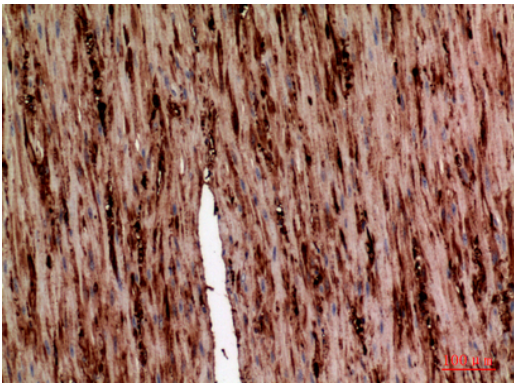
Western blotting: 1B£B1500-1B£B12000

Immunohistochemistry: IHC: 1:100-1:300

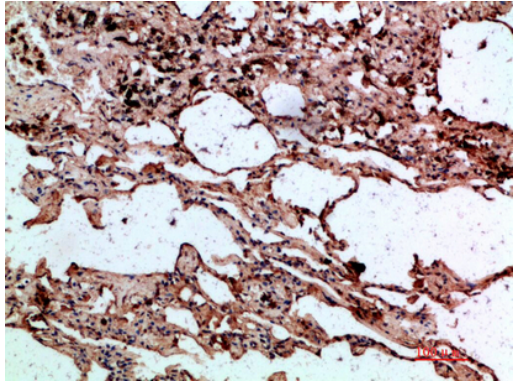
Images



Western Blot analysis of NIH-3T3 cells using AAT Polyclonal Antibody.. Secondary antibody was diluted at 1:20000



Immunohistochemical analysis of paraffin-embedded human-colon, antibody was diluted at 1:100



Immunohistochemical analysis of paraffin-embedded human-lung, antibody was diluted at 1:200

Note: This product is for in vitro research use only