

## MIA2 Polyclonal Antibody

Catalog No: #46734

Package Size: #46734-1 50ul #46734-2 100ul

Orders: order@signalwayantibody.com

Support: tech@signalwayantibody.com

## Description

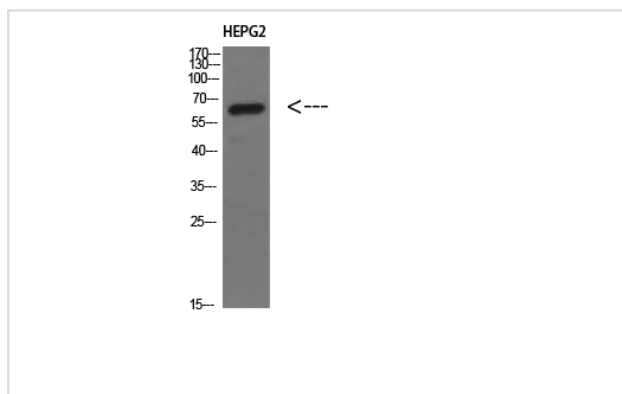
Product Name	MIA2 Polyclonal Antibody
Host Species	Rabbit
Clonality	Polyclonal
Purification	The antibody was affinity-purified from rabbit antiserum by affinity-chromatography using epitope-specific immunogen.
Applications	WB IHC
Species Reactivity	Hu
Specificity	MIA2 Polyclonal Antibody detects endogenous levels of MIA2
Immunogen Type	protein
Immunogen Description	Synthesized peptide derived from MIA2 at AA range: 361-410
Target Name	MIA2
Other Names	Melanoma inhibitory activity protein 2
Accession No.	Swiss-Prot:Q96PC5NCBI Gene ID:117153
Uniprot	Q96PC5
GeneID	4253;
Calculated MW	65 kDa
Concentration	1 mg/ml
Formulation	Liquid in PBS containing 50% glycerol, 0.5% BSA and 0.02% sodium azide.
Storage	Store at -20°C

## Application Details

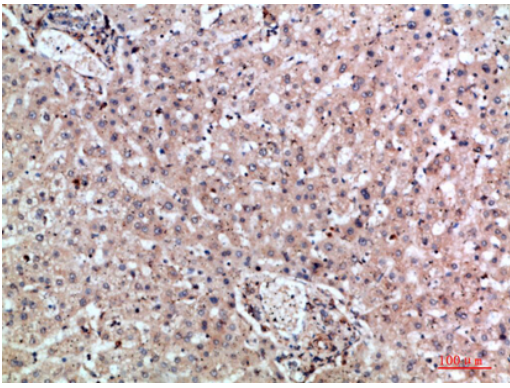
Western blotting: 1B£B'1500-1B£B'12000

Immunohistochemistry: IHC: 1:100-1:300

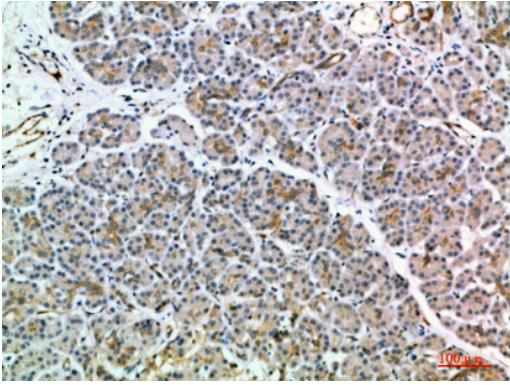
## Images



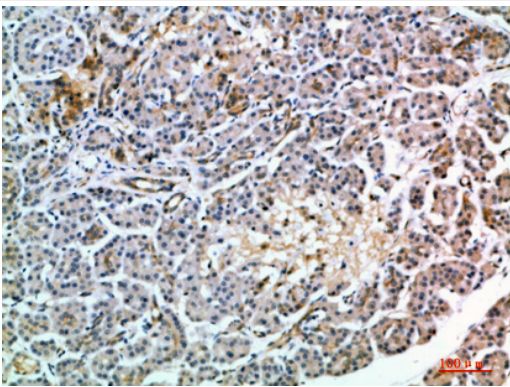
Western Blot analysis of HEPG2 cells using MIA2 Polyclonal Antibody diluted at 1:500. Secondary antibody was diluted at 1:20000



Immunohistochemical analysis of paraffin-embedded human-liver, antibody was diluted at 1:200



Immunohistochemical analysis of paraffin-embedded human-pancreas, antibody was diluted at 1:200



Immunohistochemical analysis of paraffin-embedded human-pancreas, antibody was diluted at 1:200

---

Note: This product is for in vitro research use only