

## ETBR Polyclonal Antibody

Catalog No: #46737

Package Size: #46737-1 50ul #46737-2 100ul

Orders: order@signalwayantibody.com

Support: tech@signalwayantibody.com

## Description

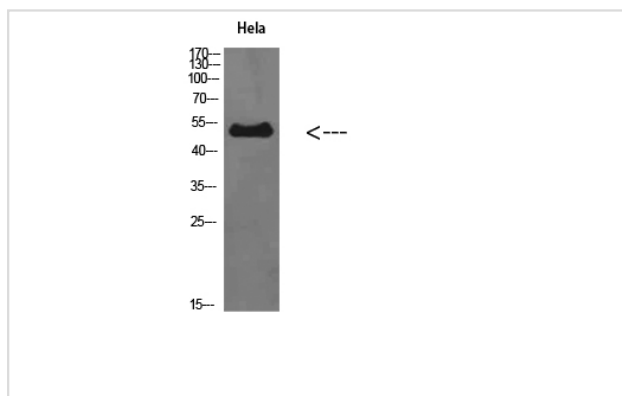
Product Name	ETBR Polyclonal Antibody
Host Species	Rabbit
Clonality	Polyclonal
Purification	The antibody was affinity-purified from rabbit antiserum by affinity-chromatography using epitope-specific immunogen.
Applications	WB IHC
Species Reactivity	Hu
Specificity	ETBR Polyclonal Antibody detects endogenous levels of ETBR
Immunogen Type	protein
Immunogen Description	Synthesized peptide derived from ETBR at AA range: 31-80
Target Name	ETBR
Other Names	Endothelin B receptor (ET-B) (ET-BR) (Endothelin receptor non-selective type)
Accession No.	Swiss-Prot:P24530NCBI Gene ID:1910
Uniprot	P24530
GeneID	1910;
Calculated MW	50 kDa
Concentration	1 mg/ml
Formulation	Liquid in PBS containing 50% glycerol, 0.5% BSA and 0.02% sodium azide.
Storage	Store at -20°C

## Application Details

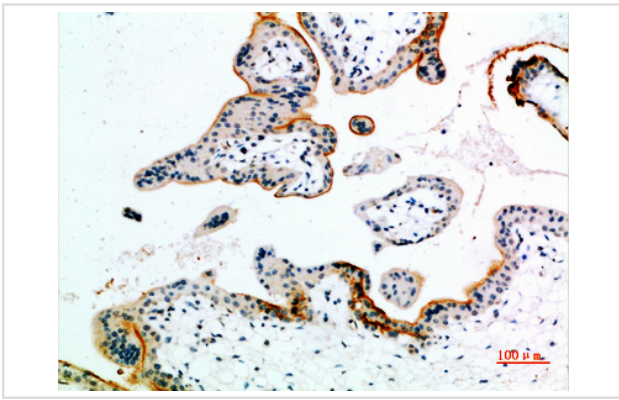
Western blotting: 1B£B1500-1B£B12000

Immunohistochemistry: IHC: 1:100-1:300

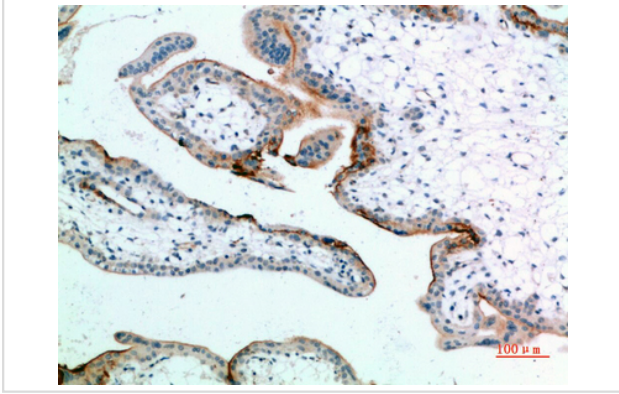
## Images



Western Blot analysis of HeLa cells using ETBR Polyclonal Antibody diluted at 1:500. Secondary antibody was diluted at 1:20000



Immunohistochemical analysis of paraffin-embedded human-placenta, antibody was diluted at 1:200



Immunohistochemical analysis of paraffin-embedded human-placenta, antibody was diluted at 1:200

---

Note: This product is for in vitro research use only