

ERLIN1/2 Polyclonal Antibody

Catalog No: #46738

Package Size: #46738-1 50ul #46738-2 100ul

Orders: order@signalwayantibody.com

Support: tech@signalwayantibody.com

Description

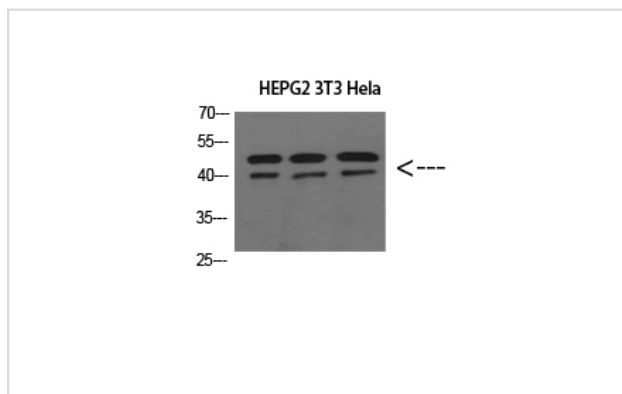
Product Name	ERLIN1/2 Polyclonal Antibody
Host Species	Rabbit
Clonality	Polyclonal
Purification	The antibody was affinity-purified from rabbit antiserum by affinity-chromatography using epitope-specific immunogen.
Applications	WB IHC
Species Reactivity	Hu Ms Rt
Specificity	ERLIN1/2 Polyclonal Antibody detects endogenous levels of ERLIN1/2
Immunogen Description	Synthesized peptide derived from ERLIN1/2 at AA range: 31-80
Target Name	ERLIN1/2
Accession No.	Swiss-Prot:O75477/O94905NCBI Gene ID:10613/11160
Uniprot	O75477
GeneID	10613;
Calculated MW	82 kDa
Concentration	1 mg/ml
Formulation	Liquid in PBS containing 50% glycerol, 0.5% BSA and 0.02% sodium azide.
Storage	Store at -20°C

Application Details

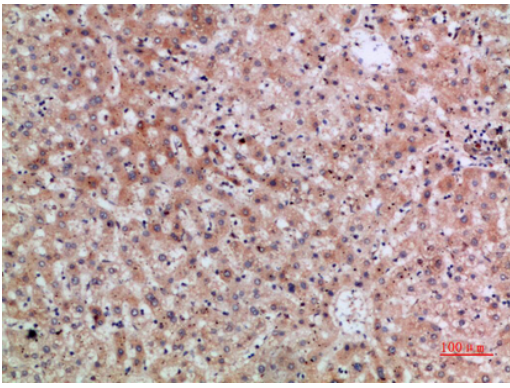
Western blotting: 1µg; &ordm;500-1µg; &ordm;2000

Immunohistochemistry: IHC: 1:100-1:300

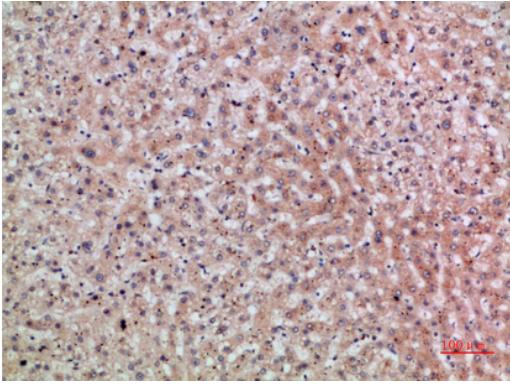
Images



Western Blot analysis of HEPG2 3T3 HeLa cells using ERLIN1/2 Polyclonal Antibody diluted at 1:800. Secondary antibody was diluted at 1:20000



Immunohistochemical analysis of paraffin-embedded human-liver, antibody was diluted at 1:200



Immunohistochemical analysis of paraffin-embedded human-liver, antibody was diluted at 1:200

Note: This product is for in vitro research use only