

Vimentin Polyclonal Antibody

Catalog No: #46743

Package Size: #46743-1 50ul #46743-2 100ul

Orders: order@signalwayantibody.com

Support: tech@signalwayantibody.com

Description

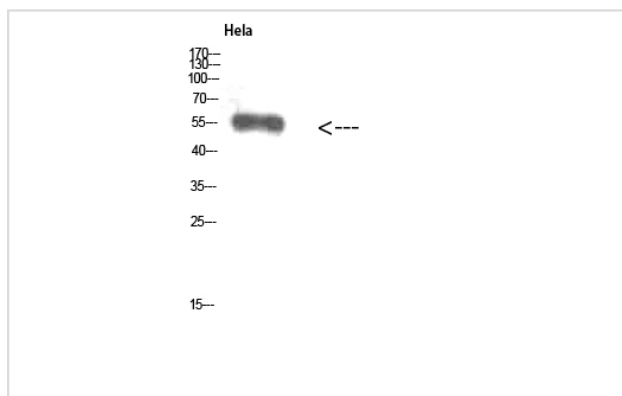
Product Name	Vimentin Polyclonal Antibody
Host Species	Rabbit
Clonality	Polyclonal
Purification	The antibody was affinity-purified from rabbit antiserum by affinity-chromatography using epitope-specific immunogen.
Applications	WB IHC
Species Reactivity	Hu Ms Rt
Specificity	Vimentin Polyclonal Antibody detects endogenous levels of Vimentin
Immunogen Type	protein
Immunogen Description	Synthesized peptide derived from Vimentin at AA range: 371-420
Target Name	Vimentin
Other Names	Vimentin
Accession No.	Swiss-Prot:P08670NCBI Gene ID:7431
Uniprot	P08670
GeneID	7431;
Calculated MW	55 kDa
Concentration	1 mg/ml
Formulation	Liquid in PBS containing 50% glycerol, 0.5% BSA and 0.02% sodium azide.
Storage	Store at -20°C

Application Details

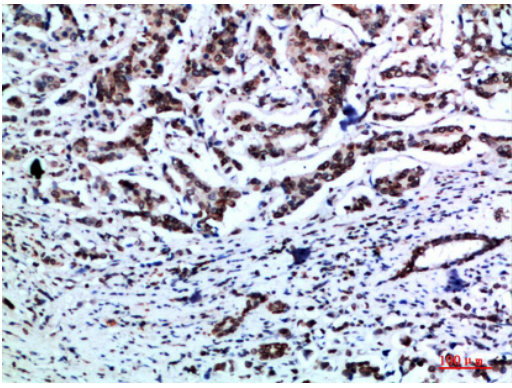
Western blotting: 1B£B'1500-1B£B'12000

Immunohistochemistry: IHC: 1:100-1:300

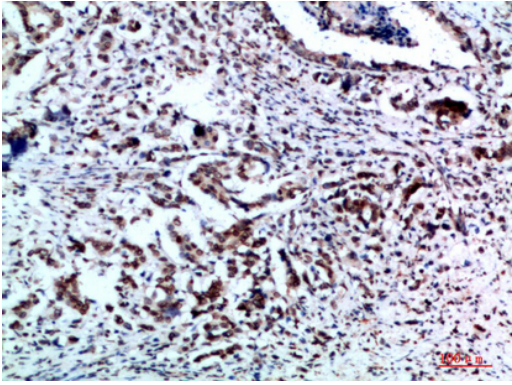
Images



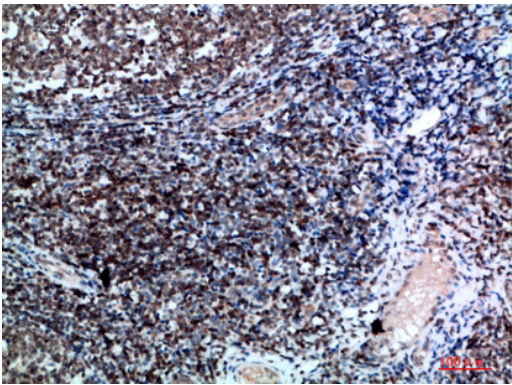
Western Blot analysis of HeLa cells using Vimentin Polyclonal Antibody diluted at 1:500. Secondary antibody was diluted at 1:20000



Immunohistochemical analysis of paraffin-embedded human-breast-cancer, antibody was diluted at 1:200



Immunohistochemical analysis of paraffin-embedded human-breast-cancer, antibody was diluted at 1:200



Immunohistochemical analysis of paraffin-embedded human-tonsil, antibody was diluted at 1:200

Note: This product is for in vitro research use only