

SPOP Polyclonal Antibody

Catalog No: #46746

Package Size: #46746-1 50ul #46746-2 100ul

Orders: order@signalwayantibody.com

Support: tech@signalwayantibody.com

Description

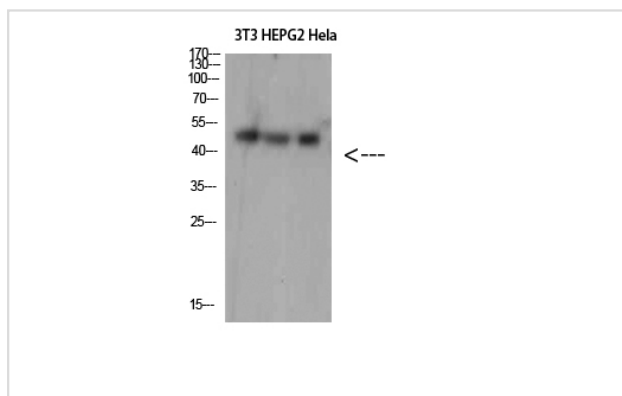
Product Name	SPOP Polyclonal Antibody
Host Species	Rabbit
Clonality	Polyclonal
Purification	The antibody was affinity-purified from rabbit antiserum by affinity-chromatography using epitope-specific immunogen.
Applications	WB IHC
Species Reactivity	Hu Ms Rt
Specificity	SPOP Polyclonal Antibody detects endogenous levels of SPOP
Immunogen Type	protein
Immunogen Description	Synthesized peptide derived from SPOP at AA range: 41-90
Target Name	SPOP
Other Names	Speckle-type POZ protein (HIB homolog 1) (Roadkill homolog 1)
Accession No.	Swiss-Prot:O43791NCBI Gene ID:8405
Uniprot	O43791
GeneID	8405;
Calculated MW	42 kDa
Concentration	1 mg/ml
Formulation	Liquid in PBS containing 50% glycerol, 0.5% BSA and 0.02% sodium azide.
Storage	Store at -20°C

Application Details

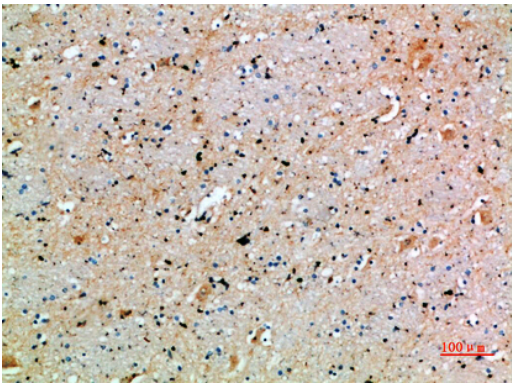
Western blotting: 1B£B1500-1B£B12000

Immunohistochemistry: IHC: 1:100-1:300

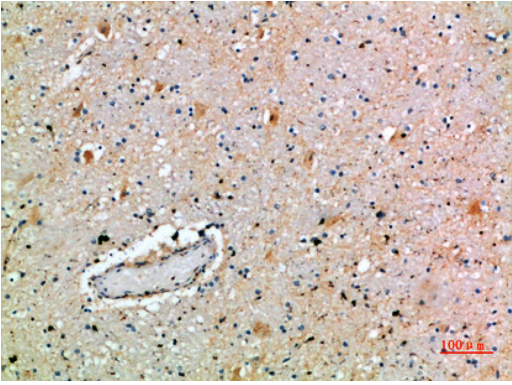
Images



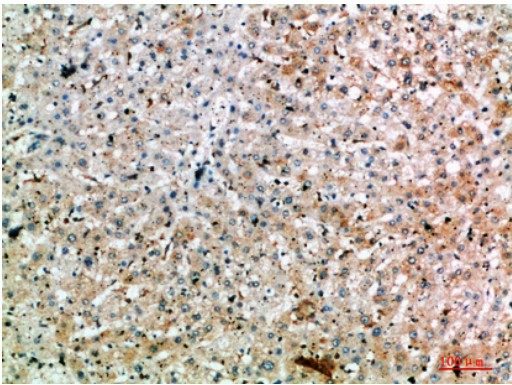
Western Blot analysis of 3T3 HEPG2 Hela cells using SPOP Polyclonal Antibody diluted at 1:1500. Secondary antibody was diluted at 1:20000



Immunohistochemical analysis of paraffin-embedded human-brain, antibody was diluted at 1:200



Immunohistochemical analysis of paraffin-embedded human-brain, antibody was diluted at 1:200



Immunohistochemical analysis of paraffin-embedded human-liver, antibody was diluted at 1:200

Note: This product is for in vitro research use only