

c-Rel Polyclonal Antibody

Catalog No: #46752

Package Size: #46752-1 50ul #46752-2 100ul

Orders: order@signalwayantibody.com

Support: tech@signalwayantibody.com

Description

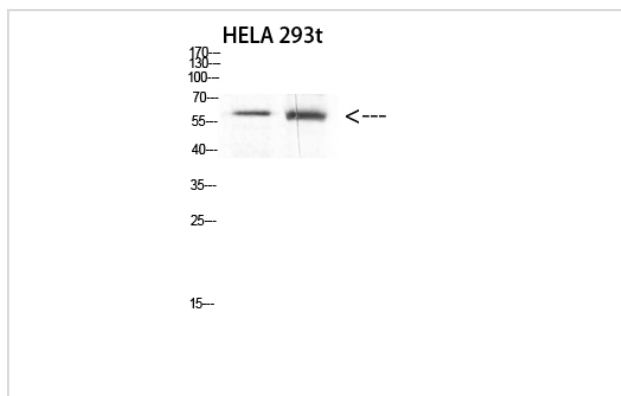
Product Name	c-Rel Polyclonal Antibody
Host Species	Rabbit
Clonality	Polyclonal
Purification	The antibody was affinity-purified from rabbit serum by affinity-chromatography using specific immunogen.
Applications	WB IHC
Species Reactivity	Hu Ms
Specificity	The antibody detects endogenous c-Rel protein
Immunogen Type	protein
Immunogen Description	Synthetic peptide from human protein at AA range: 491-540
Target Name	c-Rel
Other Names	REL
Accession No.	Swiss-Prot:Q04864NCBI Gene ID:5966
Uniprot	Q04864
GeneID	5966;
Calculated MW	68 kDa
Concentration	1 mg/ml
Formulation	Liquid in PBS containing 50% glycerol, 0.5% BSA and 0.02% sodium azide.
Storage	Store at -20°C

Application Details

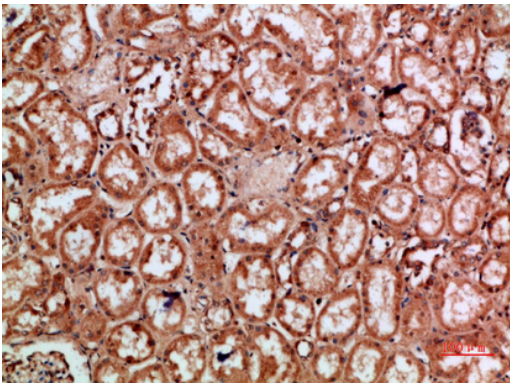
Western blotting: 1B£B1500-1B£B110000

Immunohistochemistry: IHC: 1:100-1:300

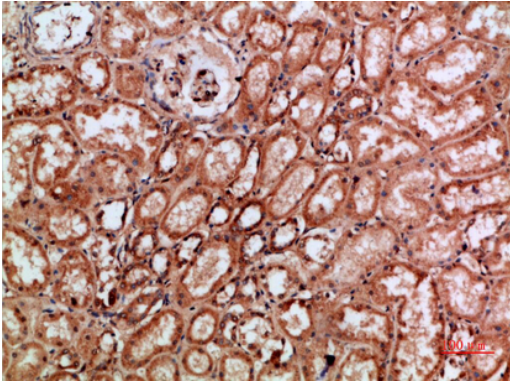
Images



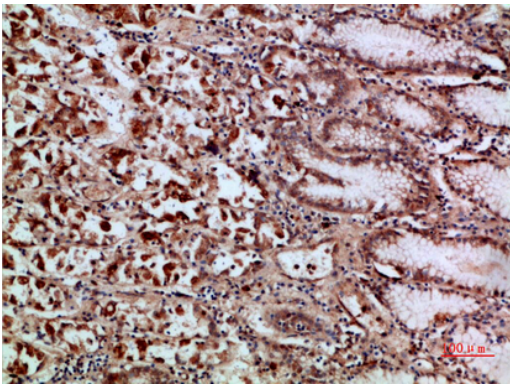
Western Blot analysis of HELA, 293t cells using Antibody diluted at 800. Secondary antibody was diluted at 1:20000



Immunohistochemical analysis of paraffin-embedded human-kidney, antibody was diluted at 1:200



Immunohistochemical analysis of paraffin-embedded human-kidney, antibody was diluted at 1:200



Immunohistochemical analysis of paraffin-embedded human-stomach, antibody was diluted at 1:200

Note: This product is for in vitro research use only