

Cytokeratin 14/17 Polyclonal Antibody

Catalog No: #46753

Package Size: #46753-1 50ul #46753-2 100ul

Orders: order@signalwayantibody.com

Support: tech@signalwayantibody.com

Description

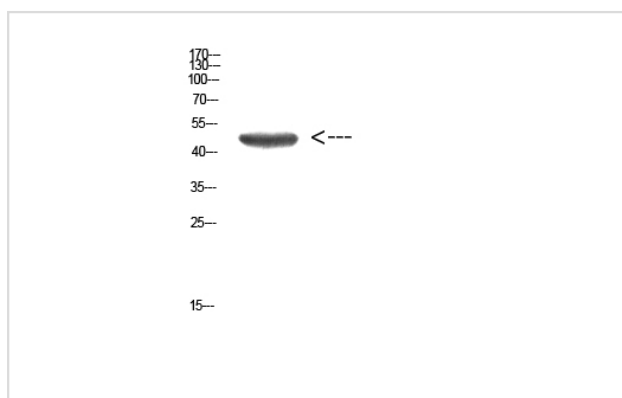
Product Name	Cytokeratin 14/17 Polyclonal Antibody
Host Species	Rabbit
Clonality	Polyclonal
Purification	The antibody was affinity-purified from rabbit serum by affinity-chromatography using specific immunogen.
Applications	WB IHC
Species Reactivity	Hu Ms Rt
Specificity	The antibody detects endogenous Cytokeratin 14/17 protein
Immunogen Type	protein
Immunogen Description	Synthetic peptide from human protein at AA range: 261-310
Target Name	Cytokeratin 14/17
Other Names	KRT14
Accession No.	Swiss-Prot:P02533/Q04695NCBI Gene ID:3861
Uniprot	P02533
GeneID	3861;
Calculated MW	52 kDa
Concentration	1 mg/ml
Formulation	Liquid in PBS containing 50% glycerol, 0.5% BSA and 0.02% sodium azide.
Storage	Store at -20°C

Application Details

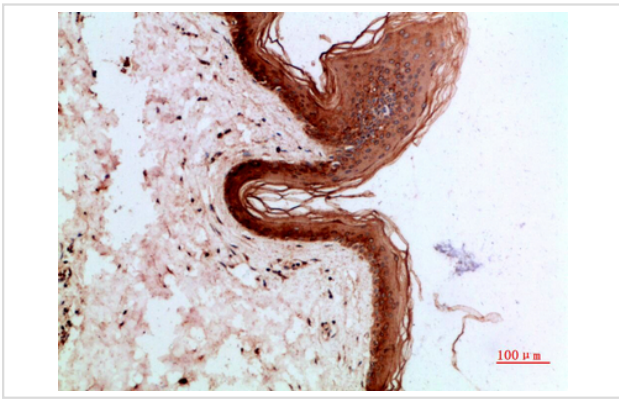
Western blotting: 1B£B1500-1B£B110000

Immunohistochemistry: IHC: 1:100-1:300

Images



Western Blot analysis of HEPG2 cells using Antibody diluted at 1000. Secondary antibody was diluted at 1:20000



Immunohistochemical analysis of paraffin-embedded human-skin, antibody was diluted at 1:200



Immunohistochemical analysis of paraffin-embedded human-skin, antibody was diluted at 1:200

Note: This product is for in vitro research use only