

WISP-3 Polyclonal Antibody

Catalog No: #46758

Package Size: #46758-1 50ul #46758-2 100ul

Orders: order@signalwayantibody.com

Support: tech@signalwayantibody.com

Description

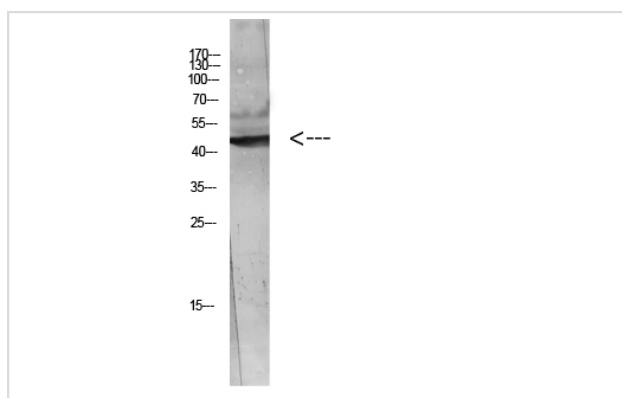
Product Name	WISP-3 Polyclonal Antibody
Host Species	Rabbit
Clonality	Polyclonal
Purification	The antibody was affinity-purified from rabbit serum by affinity-chromatography using specific immunogen.
Applications	WB IHC
Species Reactivity	Hu
Specificity	The antibody detects endogenous WISP-3
Immunogen Type	protein
Immunogen Description	Synthetic peptide from human protein at AA range: 1-50
Target Name	WISP-3
Other Names	WNT1-inducible-signaling pathway protein 3 (WISP-3) (CCN family member 6)
Accession No.	Swiss-Prot:O95389NCBI Gene ID:8838
Uniprot	O95389
GeneID	8838;
Calculated MW	55 kDa
Concentration	1 mg/ml
Formulation	Liquid in PBS containing 50% glycerol, 0.5% BSA and 0.02% sodium azide.
Storage	Store at -20°C

Application Details

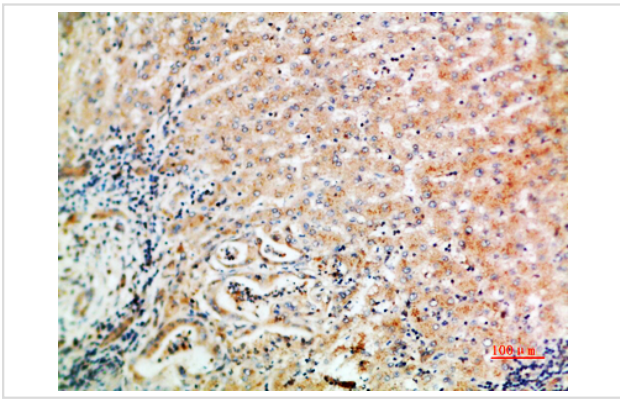
Western blotting: 1B£B1500-1B£B12000

Immunohistochemistry: IHC: 1:100-1:300

Images



Western blot analysis of HeLa Cell Lysate using antibody.
Secondary antibody was diluted at 1:20000



Immunohistochemical analysis of paraffin-embedded human-liver-cancer, antibody was diluted at 1:200

Note: This product is for in vitro research use only