

SOCS-2 Polyclonal Antibody

Catalog No: #46766

Package Size: #46766-1 50ul #46766-2 100ul

Orders: order@signalwayantibody.com

Support: tech@signalwayantibody.com

Description

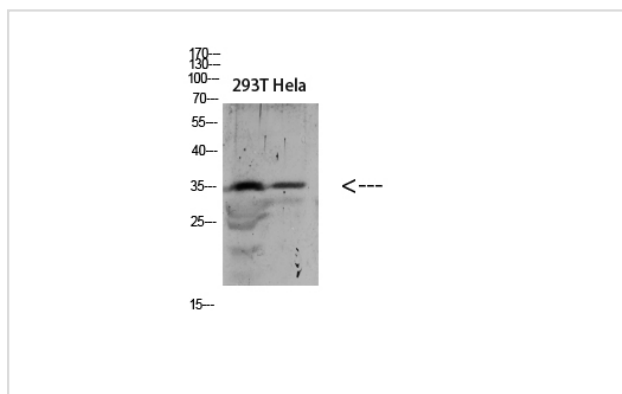
Product Name	SOCS-2 Polyclonal Antibody
Host Species	Rabbit
Clonality	Polyclonal
Purification	The antibody was affinity-purified from rabbit serum by affinity-chromatography using specific immunogen.
Applications	WB IHC
Species Reactivity	Hu Ms Rt
Specificity	The antibody detects endogenous SOCS-2
Immunogen Type	protein
Immunogen Description	Synthetic peptide from human protein at AA range: 120-170
Target Name	SOCS-2
Other Names	Suppressor of cytokine signaling 2 (SOCS-2) (Cytokine-inducible SH2 protein 2) (CIS-2) (STAT-induced STAT inhibitor 2) (SSI-2)
Accession No.	Swiss-Prot:O14508NCBI Gene ID:8835
Uniprot	O14508
GeneID	8835;
Calculated MW	35 kDa
Concentration	1 mg/ml
Formulation	Liquid in PBS containing 50% glycerol, 0.5% BSA and 0.02% sodium azide.
Storage	Store at -20°C

Application Details

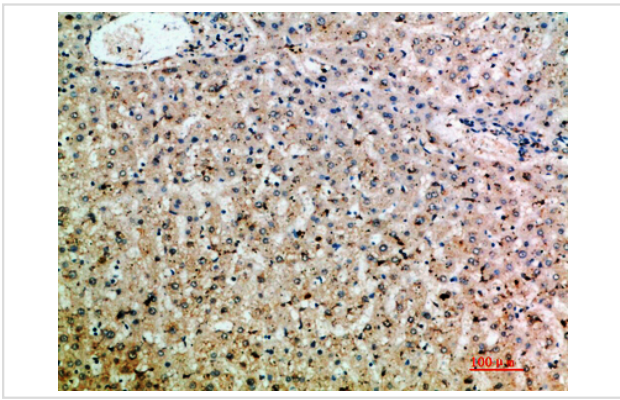
Western blotting: 1B£B1500-1B£B12000

Immunohistochemistry: IHC 1:50-300

Images



Western blot analysis of HeLa lysate, antibody was diluted at 1000. Secondary antibody was diluted at 1:20000



Immunohistochemical analysis of paraffin-embedded human-liver, antibody was diluted at 1:200

Note: This product is for in vitro research use only