

## Cdk6 Polyclonal Antibody

Catalog No: #46772

Package Size: #46772-1 50ul #46772-2 100ul

Orders: order@signalwayantibody.com

Support: tech@signalwayantibody.com

## Description

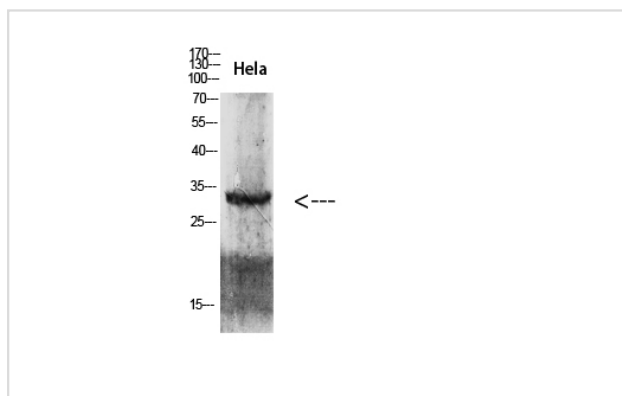
Product Name	Cdk6 Polyclonal Antibody
Host Species	Rabbit
Clonality	Polyclonal
Purification	The antibody was affinity-purified from rabbit serum by affinity-chromatography using specific immunogen.
Applications	WB IHC
Species Reactivity	Hu
Specificity	The antibody detects endogenous Cdk6
Immunogen Type	protein
Immunogen Description	Synthetic peptide from human protein at AA range: 280-325
Target Name	Cdk6
Other Names	Cyclin-dependent kinase 6 (EC 2.7.11.22) (Cell division protein kinase 6) (Serine/threonine-protein kinase PLSTIRE)
Accession No.	Swiss-Prot:Q00534NCBI Gene ID:1021
Uniprot	Q00534
GeneID	1021;
Calculated MW	34 kDa
Concentration	1 mg/ml
Formulation	Liquid in PBS containing 50% glycerol, 0.5% BSA and 0.02% sodium azide.
Storage	Store at -20°C

## Application Details

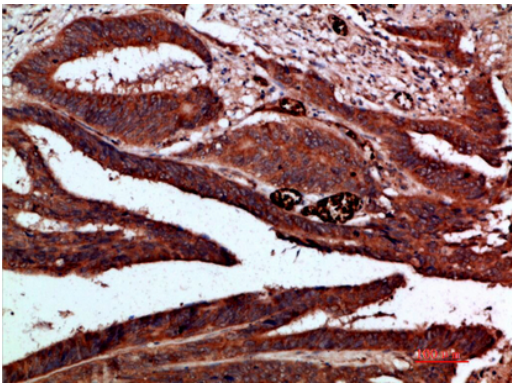
Western blotting: 1B£B'1500-1B£B'12000

Immunohistochemistry: IHC 1:50-300

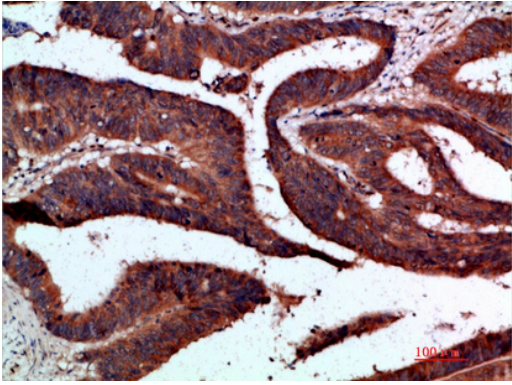
## Images



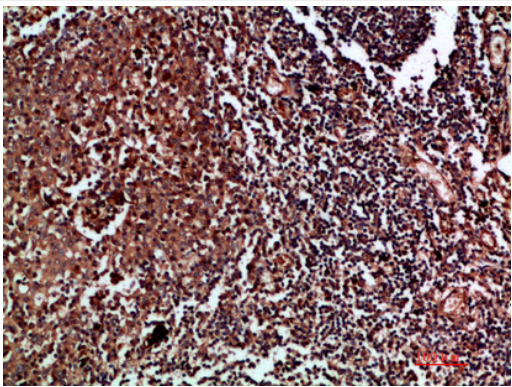
Western blot analysis of 293T HeLa lysate, antibody was diluted at 2000. Secondary antibody was diluted at 1:20000



Immunohistochemical analysis of paraffin-embedded human-colon-cancer, antibody was diluted at 1:200



Immunohistochemical analysis of paraffin-embedded human-colon-cancer, antibody was diluted at 1:200



Immunohistochemical analysis of paraffin-embedded human-tonsil, antibody was diluted at 1:200

---

Note: This product is for in vitro research use only